

PROTECTING THE HOME, THE WORKPLACE
AND SPACES BETWEEN

APECS[®]

PRODUCT CATALOGUE 2018



Manufacturer and Distributor
of Locks & Door Hardware

A MESSAGE FROM OUR MANAGING DIRECTOR

OUR PROMISE IS TO MAKE PEOPLE FEEL AND BE SAFE

“APECS began its proud history in 1992 and, in a quarter of a century, it has steadily grown to secure a leading position in the global marketplace, by designing and manufacturing a large range of high-quality hardware for the lock and architectural ironmongery industries. Our own laboratories equipped with state-of-the-art technologies ensure that APECS products are manufactured in compliance with the highest standards. Our professional relationship with testing organisations allows us to produce door hardware that stands out and ensures high-quality products our customers have confidence in.

APECS has a committed and caring team with a wealth of experience. We're serious about delivering great products and excellent customer service to our partners and customers.”



Nik Goncharov
Managing Director APECS UK

CONTENTS

APECS History	4–5
APECS Mission	6
Support for customers	7
How to place an order	8
APECS locations	9
APECS worldwide	10
APECS symbols	12
APECS UK	13
Cylinders	15–22
Locks	23–28
Padlocks & Bicycle locks	29–34
Door closers & Hinges	35–38
Door furniture & Accessories	39–45

APECS HISTORY

APECS COMES FROM THE LATIN WORD “APEX”, WHICH MEANS "SUMMIT, PEAK, TOP".

Striving to be the best is embedded in our name and vision. To us, this means creating products that benefit our customers’ personal and professional space.

We have succeeded by staying true to our priorities – to adhere to the customer's desires and needs. We learn and grow every day in order to make their lives safer. Our Innovation Centres and manufacturing solutions guarantee protection and security for customers worldwide.

Over the last 25 years APECS has established itself as a pioneer and a trustworthy partner in the lock industry. We are a family-run business and value close-knit relations with associates and customers all over the world, while operating from five sites in London, Beijing, Ljubljana, Kharkiv, and Moscow. We employ over 600 staff across three continents and we are thrilled to continue expanding.

Despite entering the UK market only a few years ago, we have firmly established our supply chain and sales support in the union. We operate from our main office in London’s Chelsea Harbour and have a dedicated team dealing with operations, manufacturing, customer service and marketing. Our main aim is to ensure that every APECS customer receives bespoke treatment, regardless of the size of the order.



OUR FACTORY

Our factory in China has operated for more than 14 years. We ensure top-quality output and that production standards are complied with for our own range of APECS-branded products, as well as the variety of solutions for the OEM market.



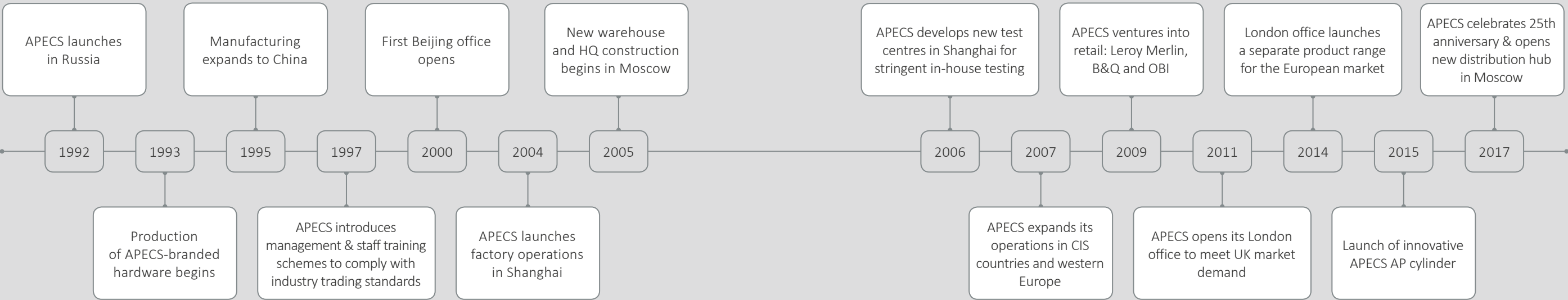
OUR LABORATORIES

Our own laboratories are equipped with state-of-the-art technologies to ensure that all products are manufactured in compliance with the highest standards set by European, Russian and US testing authorities.



OUR TEAM

Our employees are the main reason we are able to deliver great products, services and experiences to our customers around the world every day. We believe in rewarding our staff for their efforts and we are very proud that many of our employees have been with APECS since the beginning.



OUR MISSION



OUR VISION

We strive to make people feel safe and protected. We mobilise our expertise, innovations and global partnerships to manufacture solutions that guarantee protection and security for people worldwide.



OUR MISSION

We invest our experience to consistently provide our customers with superior quality hardware products that satisfy their needs and exceed expectations. We work to create solutions that are timely and affordable to all.



OUR VALUES

Our purpose is to guarantee security and we are devoted to performance and customer satisfaction. We strive to be trusted, respected and valued by our partners and customers.

GUARANTEE SECURITY

We know our customers want to feel and be safe. We aim to provide excellence, value and innovative products to ensure safety throughout.

WORK AS A TEAM

We work as a tight-knit team. We are purpose-driven, diverse and share a passion for creating and achieving mutual goals.

THINK LONG TERM

We know we succeed only when our customers and partners succeed. We do business in an open, direct and sustainable way.

SUPPORT FOR CUSTOMERS

WE AIM TO BE THE BEST CHOICE FOR OUR CUSTOMERS AND THE MOST RELIABLE PARTNER FOR OUR ASSOCIATES



WEB

Visit www.apecs.co.uk for information on our products and services we offer.



CUSTOMER SERVICE

Should you have any questions, we're happy to help from 8am to 6pm, Monday to Friday. Please call our London office **+44 (0) 207 349 9888** or send a message via WhatsApp **+44 (0) 792 883 2801**



NEWSLETTER

Our email newsletter contains the latest news, insights and events. Visit www.apecs.co.uk to stay ahead.



MARKETING SUPPORT

Our dedicated team of specialists will assist you with any enquiry. Contact us via mail on marketing@apecs.co.uk



SOCIAL MEDIA

We are on Facebook, Twitter, Instagram and LinkedIn. If you would like to collaborate with us on social media, please get in touch by mail on social@apecs.co.uk

HOW TO PLACE AN ORDER



ONLINE

- Register [on www.apecs.co.uk/register](http://www.apecs.co.uk/register) for trade account
- Our admin team will be in touch within 24 hours
- View products and technical information
- Place order online and view your order history



PHONE

- Contact us on **+44 (0) 207 349 9888** and register over the phone for trade account
- Place an order over the phone



OFFICE

- Come to our London Office:
302-303 Harbour Yard, Chelsea Harbour, SW10 0XD
- Register in-house for trade account
- Place an order

NEXT-DAY DELIVERY

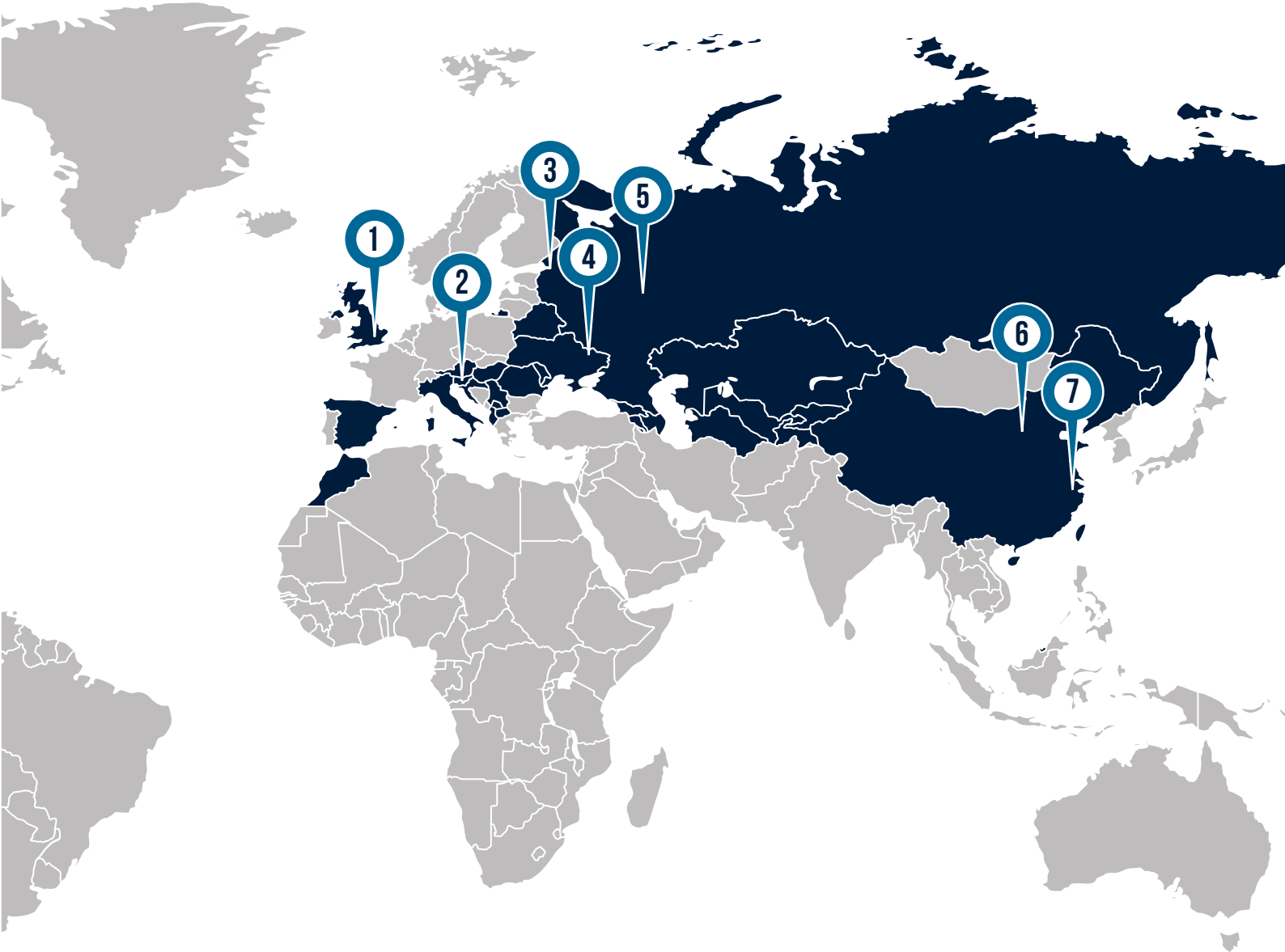
Order before 1pm to receive your order next day (UK Mainland)*.

FREE DELIVERY

To qualify for a free delivery, order net total must be £60 excluding VAT.

*Orders made before 1pm are dispatched and delivered the next working day (Monday – Friday) excluding bank holidays and weekends, subject to stock availability.
*Delivery times are not guaranteed. Specific delivery details will be confirmed at the time of order. UK Mainland referred to as England, Wales and Scotland excluding Dumfries & Galloway, Tayside, Border Counties, Grampian and Highlands.

APECS LOCATIONS



APECS OFFICES:

1. London
2. Ljubljana
3. St. Petersburg
4. Kharkiv
5. Moscow
6. Beijing
7. Shanghai

APECS PRESENCE:

Albania, Armenia, Austria, Azerbaijan, Belarus, China, Croatia, Georgia, Hungary, Italy, Kazakhstan, Kosovo, Kyrgyzstan, Macedonia, Moldova, Morocco, Poland, Romania, Russia, Serbia, Slovenia, Spain, Tajikistan, Turkmenistan, Ukraine, United Kingdom, Uzbekistan



PRODUCT EXPERTISE

APECS develops a wide range of products to protect homes, workplaces and spaces between against intrusion by burglars and unauthorised visitors.

We distribute products to consumers via professional APECS partners in various areas as well as via major retailers and home improvement stores.



OEM BUSINESS

APECS values its OEM (Original Equipment Manufacturer) partners. We support the industry and our associates with our knowledge and valuable experience of manufacturing and security solutions.



PROJECT ASSIGNMENTS


APECS offers security expertise in various sectors, ranging from retail to commercial and public properties. Our scope of products allows us to deliver end-to-end projects. We provide a range of efficient and cost-effective application options and solutions.





WE ARE DEVOTED TO CUSTOMER SATISFACTION:


WE WORK WITH OUR CLIENTS AND PARTNERS TO ENSURE THAT THEY GET THE MOST COST-EFFICIENT QUALITY PRODUCTS.


APECS SYMBOLS


- 


Elements designed to protect from lock picking
- 


Elements designed to protect against bumping
- 


Elements protecting against drilling
- 


Elements protecting from sawing
- 


Elements protecting from plug extraction
- 


Mechanism designed to protect from snapping
- 


The product can be fitted on the right or on the left doors
- 


Opening angle 180
- 


Declaration that the product meets the requirements of the Neutral Salt Spray (NSS) testing
- 

Declaration that the product meets the requirements of durability testing
- 

Fire resistant
- 

Declaration that the product meets the requirements of the Rockwell's material hardness testing
- 

Features designed to deliver silent operation
- 


The product has a loud alarm to enhance protection from burglary
- 


The product is weatherproof


- 

Tested to ART quality label certification of bicycle locks (NL)
- 

Fit for use in -30 to +60 temperature range
- 

Product passed APECS laboratory testing to the industry standards or above
- 

3D adjustable (horizontal, vertical, in-depth)
- 

Door width 30-90mm
- 

180° angle of vision
- 

The patent certification is pending

CERTIFICATION SYMBOLS

- 

Accredited by impartial British Standards Institute (BSI)
- 

Awarded the highest BSI Kitemark (three stars) and passed all criteria of the TS007 BSI Kitemark, inc. lock snapping tests
- 

Awarded BSI Kitemark one star, and passed all criteria of the TS007
- 

Awarded BSI Kitemark in respect of BS3621 Thief Resistant Lock assembly, Key egress
- 

Accredited by Sold Secure (SS)
- 

Passed the Sold Secure test to the highest standard, Diamond grade

APECS UK

MEET OUR TEAM

AT APECS WE ARE HAPPY TO MEET OUR CUSTOMERS. IF YOU WOULD LIKE TO VISIT OUR OFFICE AND TRY OUR PRODUCTS, PLEASE GET IN TOUCH.

OUR OFFICE IS OPEN 8AM-6PM, MONDAY TO FRIDAY. PLEASE SCHEDULE YOUR VISIT BEFOREHAND. WE LOOK FORWARD TO DISCUSSING YOUR NEEDS AND WHAT SOLUTIONS WE CAN OFFER TO YOUR BUSINESS.





CYLINDERS

APECS OFFERS A COMPREHENSIVE AND FLEXIBLE RANGE OF CYLINDERS.

OUR CYLINDERS ARE AVAILABLE IN MOST WIDELY USED VARIATIONS, ALLOWING CUSTOMERS TO UTILISE THEIR EXISTING IRONMONGERY.

EACH PRODUCT BATCH IS RIGOROUSLY TESTED:

WE TEST EVERY PRODUCT BATCH TO ENSURE CONSISTENT QUALITY AND GUARANTEE OUTSTANDING PERFORMANCE.

AP CYLINDER

APECS AP — MAXIMUM LEVEL OF SECURITY AGAINST FORCED ENTRY METHODS OF ATTACK

LOCK SNAPPING IS THE MOST COMMON METHOD OF ATTACK. THE APECS AP CYLINDER IS SPECIALLY DEVELOPED TO PROTECT FROM UNAUTHORISED ACCESS BY BURGLARS.

The AP cylinder is engineered with a unique sacrificial point where it is designed to snap in a way not to allow further damage of the lock inside. The snapping occurs at a strategic distance from the cylinder’s vulnerable central section, leaving the burglar virtually powerless.

In the event of snapping, the home owner can still operate the door and exit the property due to the lock's unique mechanism, which is engaged when the cylinder's external part is snapped off. This mechanism slides the clutch in place, preventing further external damage and manipulation of the cam, while securing the opportunity to operate the lock from the inside.



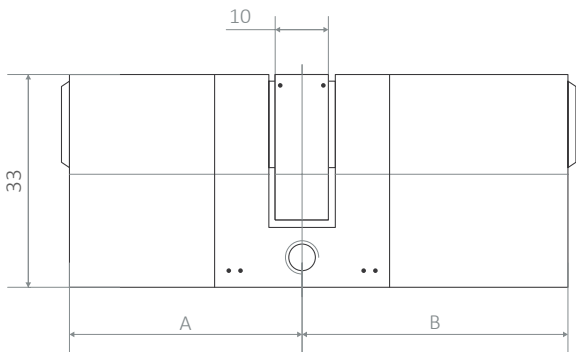
1. Double locking mechanism with track pins
2. Snap secure sacrificial point
3. Anti-plug extraction
4. Hardened Steel pins in the core and in the body
5. Hardened Steel cam protection block
6. Patent-pending interlocking mechanism
7. Special grooved pins
8. Operable from inside after external snap



AVAILABLE AS
A KEY-KEY
OR KEY-THUMBTURN



SCAN THE QR CODE
TO WATCH
PRODUCT VIDEO



The APECS AP cylinder offers maximum protection. It safeguards from all forced methods of attack, ranging from snapping, drilling, plug-extraction, picking and bumping. It also features an interlocking mechanism with a unique cam protection block and is operable from inside when the lock is tampered with externally.

CERTIFICATES

- BSI 3 Star Kitemark – KM621947
- Sold Secure Diamond Standard – CLME08161454
- Tested to TS007:2014 A1:2015
- Tested to EN1303:2015 — 16000C6D

SECURITY INFORMATION

- Anti-pick: 4 anti-pick pins on each side
- Anti-bump: double locking mechanism with track rail pins in combination with a unique shallow chamber
- Anti-drill: 1 anti-drill pin on each side
- Snap-secure sacrificial point
- Restricted key profile
- 5-year guarantee

Material	Brass/Hardened Carbon Steel
Cylinder mechanism type	Pin tumbler
Effective differs	In excess of 180,000
Number of pins	9
Sizes	70-110mm and offsets
Variations	Key-Key & Thumbturn
Key type	Restricted profile dimple key
Number of keys	3
Finish	Brushed Brass/Brushed Satin Nickel

UNIQUE FEATURES:

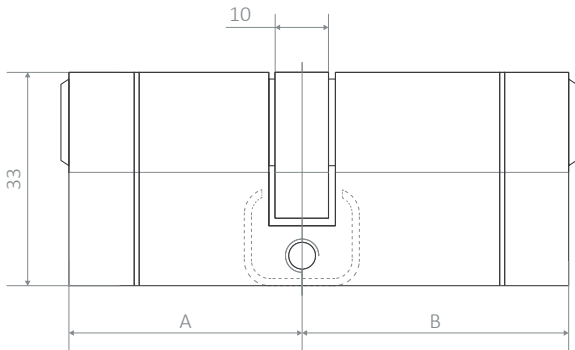
- Double locking mechanism with additional track rail pins
- Patent pending interlocking mechanism and hardened cam protection block prevents from snapping and plug extraction
- Patent pending ball-bearing connection ensures additional operation smoothness and strong fixing between the cylinder core and the cam
- Operable from inside when lock is tampered with externally

CYLINDERS:



N6 CYLINDER

APECS N6 CYLINDER PROVIDES PROTECTION AGAINST COMMON METHODS OF ATTACK



N6 is a Kitemark 1 star cylinder with 6 pins, 117 000 differs and a dimple key, providing a high security solution for everyday use. This cylinder is developed to protect from picking, drilling and bumping methods of attack.

CERTIFICATES

- BSI 1 Star Kitemark – KM621947
- Tested to TS007:2014 A1:2015
- Tested to EN1303:2005 — 16000C62*

SECURITY INFORMATION

- Anti-pick: 4 anti-pick pins on each side
- Anti-bump: shallow chamber
- Anti-drill: 3 anti-drill pins on each side
- Anti-plug extraction
- Brass differ and driver pins
- Stainless Steel springs

Material	Brass
Cylinder mechanism type	Pin tumbler
Effective differs	In excess of 117,000
Number of pins	5 or 6
Sizes	62-110mm and offsets
Variations	Key-Key & Thumbturn
Key type	Dimple key
Number of keys	3
Finish	Brass/Satin Nickel

UNIQUE FEATURES

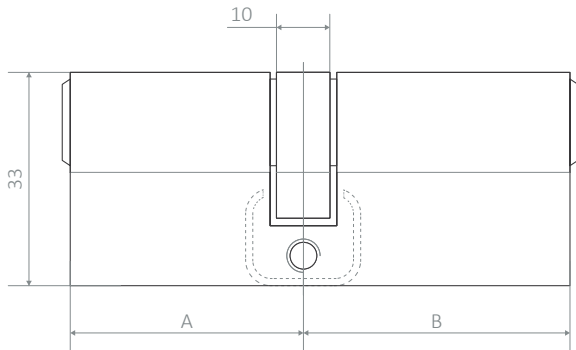
- U-shaped Stainless Steel protection pin & sacrificial cut
- Grub screws for easy repinning



CYLINDERS:

XS CYLINDER

APECS XS CYLINDER PROVIDES RESISTANCE AGAINST COMMON METHODS OF ATTACK



APECS XS open profile cylinder offers a high-security locking solution at an affordable price. The cylinder offers protection from main forced entry methods of attack: drilling, picking, bumping and plug extraction.

CERTIFICATES

- BSI 1 Star Kitemark – KM621947
- Tested to TS007:2014 A1:2015
- Tested to EN1303:2005 — 16000C62*

SECURITY INFORMATION

- Anti-pick: 4 anti-pick pins on each side
- Anti-bump: shallow chamber
- Anti-drill: 3 anti-drill pins on each side
- Anti-plug extraction
- Brass differ and driver pins
- Stainless Steel springs

Material	Brass
Cylinder mechanism type	Pin tumbler
Effective differs	In excess of 117,000
Number of pins	6
Sizes	70-110mm and offsets
Variations	Key-Key & Thumbturn
Key type	Standard key
Number of keys	3
Finish	Brass/Satin Nickel

UNIQUE FEATURES

- U-shaped Stainless Steel protection pin that prevents from plug extraction

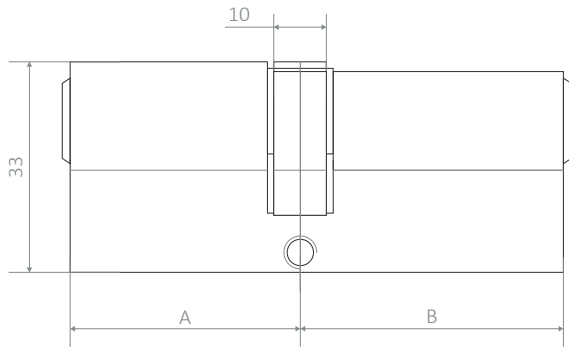


CYLINDERS:



BC CYLINDER

APECS BC STANDARD CYLINDER OFFERS A MODERATE LEVEL OF SECURITY AT A HIGHLY COMPETITIVE PRICE



APECS BC open profile cylinder is suitable for any euro lock and will fit uPVC, timber and any other entrance doors when security is required with a moderate level of protection.

CERTIFICATES

- Tested to EN1303:2015 — 16000C30

SECURITY INFORMATION

- Brass driver and differ pins
- Single row — 6 pins

Material	Brass
Cylinder mechanism type	Pin tumbler
Effective differs	In excess of 15,000
Number of pins	6
Sizes	60-110mm and offsets
Variations	Key-Key & Thumbturn
Key type	Standard key
Number of keys	3
Finish	Brass/Nickel

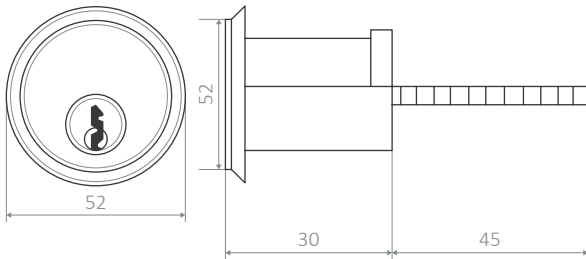


CYLINDERS:



RC CYLINDER

APECS RC CYLINDER FOR SURFACE MOUNTED LOCKS OPERATING FROM A TAILBAR



APECS RC rim cylinder is an industry standard-sized lock and an easy retro-fit replacement to suit all common nightlatches. It provides key access from the external side of the door. The cylinder offers a moderate level of security at a fair price. Solid rose and a backplate are supplied to complete the set.

SECURITY INFORMATION

- Drill resistant cylinder housing
- Brass rim body and rose
- Brass cylinder core with brass differ and driver pins
- Stainless Steel Spring

Material	Brass
Cylinder mechanism type	Pin tumbler
Number of pins	5
Tail	45mm
Key type	Standard key
Number of keys	3
Finish	Brass/Nickel





LOCKS

WHETHER YOU ARE LOOKING FOR STEADFAST DEFENCE OR SIMPLY RELIABLE SECURITY, APECS HAS A DIVERSE ARRAY OF LOCKS FIT FOR RESIDENTIAL AND COMMERCIAL PROPERTIES TO COVER YOUR NEEDS.

APECS FACTORY IN SHANGHAI:

- 140 EXPERIENCED STAFF MEMBERS
- IN-HOUSE RESEARCH AND DEVELOPMENT DEPARTMENT
- SUPPORTS SEVERAL LEADING BRANDS IN THE LOCK INDUSTRY WITH ITS EXPERTISE

LOCKS:

LX5 DEADLOCK

APECS LX5 LEVER DEADLOCK IS AN IDEAL SOLUTION FOR MOST RESIDENTIAL AND COMMERCIAL TIMBER DOORS

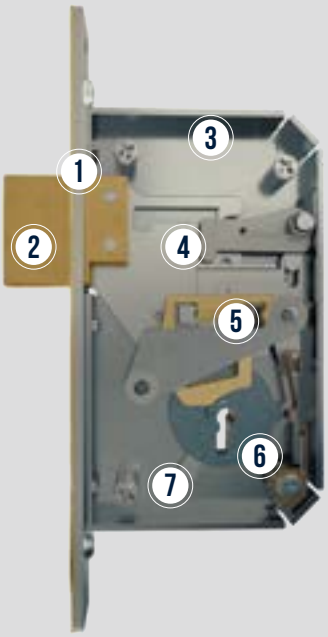
APECS has modified the traditional British 5-lever high security deadlock, by developing its own unique springless mechanism. This mechanism delivers lost motion action and helps to secure the lock from picking, as well as provide long-lasting durability.

The lock features a solid brass 20mm deadbolt, reinforced with Hardened Steel pins, which guarantees the highest level of protection from drilling and sawing.

In addition, LX5 comes with Hardened Steel plates on each side to withstand severe drill attacks.

The lock can also be fitted with either a single or double pole micro switch, to have the door additionally secured with an alarm.

APECS LX5 is an ideal retrofit upgrade for 5 lever deadlocks on the market, as well as a great choice for new entrance doors.



1. Forend

2. Deabolt


3. Lockcase

4. Bolt tail

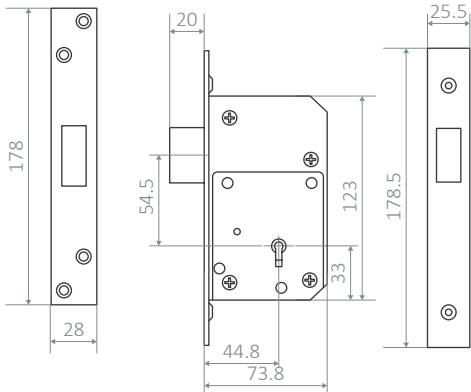
5. Springless lever

6. Barrel

7. Synchronising Cam Thrower



SCAN THE QR CODE
TO WATCH
PRODUCT VIDEO



SECURITY INFORMATION

- APECS LX5 is BS3621: 2007 tested
- Extended 20mm bolt throw
- Deadbolt is locked or unlocked by key on either side
- Single turn locking
- Anti-saw feature: Deadbolt with Hardened Steel pins
- Anti-drill feature: Hardened Steel plates on both sides
- Anti-pick feature: Springless lever mechanism
- Box strike assembly and fixing screws included
- Operation — in excess of 50,000 cycles

Case size	73.8 x 123mm
Forend size	25.5 x 178.5mm
Faceplate	Stainless Steel or brass
Backset	44mm
Finish	Silver

UNIQUE FEATURES

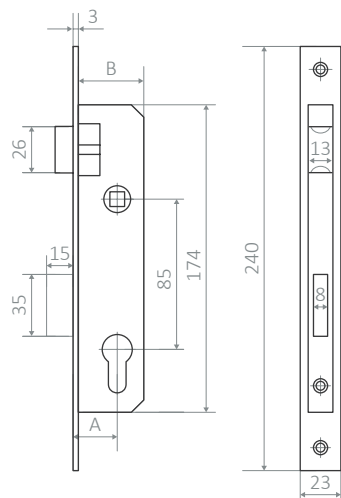
- Springless lever mechanism provide long-lasting durability and lost motion action
- Space to fit single or double pole micro switches
- Easy retrofit solution
- Unique mechanism provides smooth key operation



LOCKS:

NP75 EURO SASHLOCK

APECS NP75 IS A NARROW PROFILE SASHLOCK AND AN IDEAL SOLUTION FOR ALUMINIUM DOORS



APECS NP75 is ideal for slimline profile aluminium doors and can also be used on uPVC and timber doors, when 85 PZ centres are required, but where multi-point locking is not possible and/or not needed. The advantage of locks in this series is their wide range of backsets (20mm-45mm), providing a solution for virtually any narrow-style doors. The latch is reversible with a simple twist to quickly and easily change the handling of the lock.

- Perfect for aluminium doors
- Accepts euro profile cylinder locks
- Reversible latch bolt
- Provides both latch and deadbolt locking
- Striking plate and screws are included
- Operation — 250,000 cycles
- Corrosion tested — 72 hours NSS

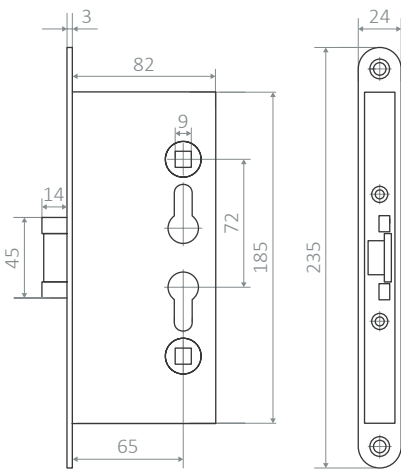
Material	Steel
A — Backset (mm)	20/25/30/35/40/45
Centres	85mm
B — Case depth (mm)	37/42/47/52/63/68
Case width	13mm
Case height	174mm
Faceplate width	23mm
Faceplate length	240mm
Bolt throw	15mm
Spindle hole	8mm
Finish	Nickel



LOCKS:

3000 MORTICE LOCK

APECS 3000 FIRE-RESISTANT MORTICE LOCK IS SUITABLE FOR MOST RESIDENTIAL AND COMMERCIAL DOOR APPLICATIONS



APECS 3000 is a high quality fire-resistant mortice lock for external doors. The lock's features prevent it from being left unlatched, making it ideal for fire doors. Due to its high quality and durability, APECS 3000 is perfect for commercial applications and for use in high footfall areas where doors are in constant use. This fire rated mortice lock offers effortless left and right handed installation.

- Accepts euro profile cylinders
- Reversible lock
- Provides both latch and deadbolt locking
- Key action on latch bolt
- In-house tested to EN 12209
- European certification pending
- Operation — 500,000 cycles
- Corrosion resistant — 24 hours NSS

Material	Steel
Backset	65mm
Centres	72mm
Case width	17mm
Case depth	82mm
Case height	185mm
Faceplate width	24mm
Faceplate length	235mm
Bolt throw	14mm
Spindle hole	8mm
Finish	Nickel





PADLOCKS & BICYCLE LOCKS

CHOOSE ONE OF THE HIGH SECURITY
PADLOCKS OR BICYCLE LOCKS
FROM OUR RANGE TO KEEP YOUR
BELONGINGS SAFE AND YOUR BIKE
PROTECTED.

APECS DISTRIBUTION HUB:

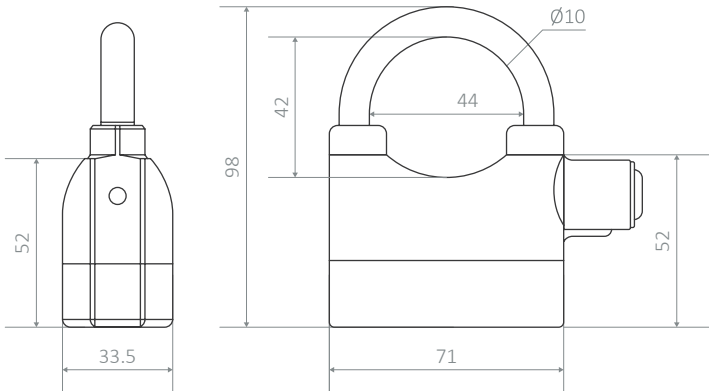
- 21,000 PALLET SPACES
- HOLDS OVER 500 CONTAINERS
- OVER 100 DISPATCHES A DAY

PADLOCKS:



PDZ ALARM PADLOCK

APECS PDZ IS AN INNOVATIVE ALARMED PADLOCK THAT HAS ADDITIONAL LEVEL OF SECURITY WHICH DISTINGUISHES IT FROM MOST PADLOCKS



APECS PDZ is a battery-powered padlock with a built-in 110Db siren. It detects shock motion — if the body or shackle are attacked, the siren is activated until manipulations are stopped. Its zinc alloy body and heat processed Hardened Steel shackle ensure it is resilient to cutting and is corrosion resistant. The padlock is extensively used for vehicles, tool boxes, garden sheds, warehouses and many more applications. In addition, the alarm can be disabled when not required.

- 110Db twin tone siren
- Attack and shock sensor
- Hardened Steel shackle — 10mm
- Waterproof
- Frost-resistant
- High-security locking mechanism
- Extra set of LR44 button cell batteries

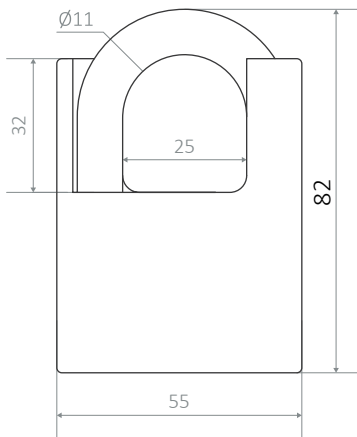


PADLOCKS:



MASTIFF PADLOCK

APECS MASTIFF IS A SECURITY PADLOCK SUITABLE FOR A VARIETY OF APPLICATIONS INCLUDING PERSONAL AND COMMERCIAL USE



A high-security alternative to standard brass padlocks. Enlarged walls protect the lock from force and saw attacks. Highly resilient to all types of weather conditions due to its solid brass body and Hardened Steel shackle.

- Closed shackle protection
- Hardened Steel shackle — 11mm
- Corrosion-resistant
- Frost-resistant
- High-security locking mechanism

Material	Brass / Steel
Locking mechanism	Disc tumbler
Height	82mm
Width	55mm
Shackle	Hardened Steel
Shackle height spacing	32mm
Shackle width spacing	25mm
Number of keys	4
Finish	Chrome

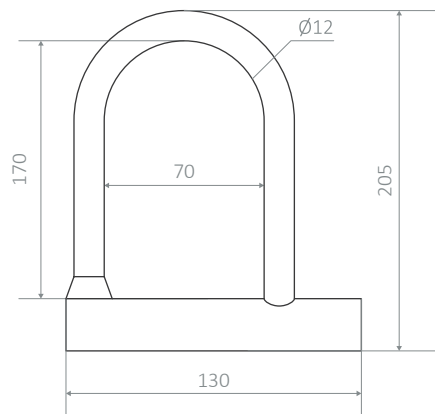


BICYCLE LOCKS:



BL 12 BICYCLE LOCK

APECS BL 12 BICYCLE LOCK PROVIDES RIDERS WITH SECURITY AND EASE OF TRANSPORT



APECS BL 12 of a moderate level security, with a 12mm Hardened Steel shackle provides great cut resistance. Designed to have a simple and sleek look with rubber protective coating it keeps your frame's paintwork scratch-free.

- Hardened Steel shackle — 12mm
- Weatherpoof
- Frost-resistant
- High-security locking mechanism

Material	Brass / Steel
Locking mechanism	Disc tumbler
Height	205mm
Width	130mm
Shackle	Hardened Steel
Shackle height spacing	170mm
Shackle width spacing	70mm
Number of keys	2
Finish	Chrome & Blue rubber

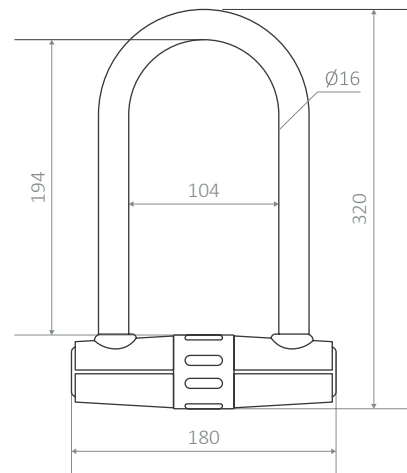


BICYCLE LOCKS:



BL 16 BICYCLE LOCK

APECS BL 16 PROVIDES A HEAVY DUTY BICYCLE LOCK SOLUTION IDEAL WHEN LEFT FOR AN EXTENDED PERIOD OF TIME



APECS BL16 provides a high security option for protecting a bicycle, with a Hardened Steel 16mm shackle. The lock has been tested to Art 4051 4*. Rubber protective coating keeps your frame paintwork scratch-free. Double bolt locking mechanism for an extensive holding power and a high security disc style cylinder to withstand picking.

- ART 4051 certificate 4*
- Hardened Steel shackle — 16mm
- Weatherpoof
- Frost-resistant
- High-security locking mechanism

Material	Steel
Locking mechanism	Disc tumbler
Height	320mm
Width	180mm
Shackle	Hardened Steel
Shackle height spacing	194mm
Shackle width spacing	104mm
Number of keys	2
Finish	Black & Grey



DOOR CLOSERS & HINGES

APECS DOOR CLOSERS ARE DURABLE AND VERSATILE. DESIGNED TO SUIT MOST COMMERCIAL DOOR APPLICATIONS INCLUDING FIRE DOORS WHERE SAFETY IS PARAMOUNT.

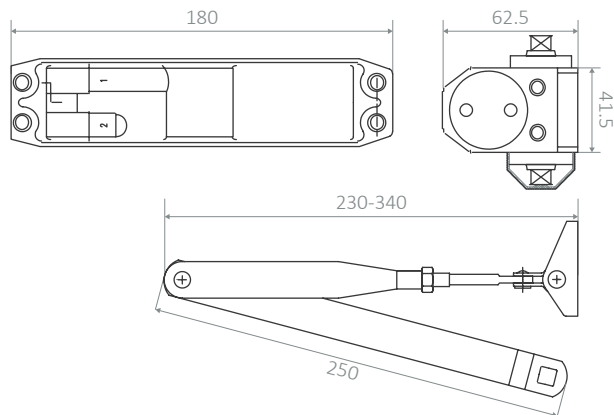
APECS PASSION:

IN 2017 APECS CELEBRATED 25 YEARS IN THE INDUSTRY. WE CONTINUE TO BE PASSIONATE ABOUT MAKING THE BEST PRODUCTS TO MAKE PEOPLE FEEL AND BE SAFE.

DOOR CLOSERS:

DC 204 DOOR CLOSER

APECS DC 204 IS A COMPACT FIXED POWER OVERHEAD DOOR CLOSER SUITABLE FOR MOST DOOR APPLICATIONS



APECS DC 204 is a compact fixed power fire resistant overhead door closer, which is suited to most common aluminium, timber or hollow metal doors and frames. This door closer exhibits characteristics of performance, durability and quality that specifiers have come to expect from APECS. As a standard, DC 204 comes with a screw thread armset with a straightforward installation.

- Operational temperature environment -30 to +60 °C
- Corrosion tested — 240 hours NSS
- Fire resistance — 60 minutes (EN1634)
- Hold Open Arm made of Hardened Steel
- Architrave bracket included
- Max opening — 180°
- Operation — 500,000 cycles

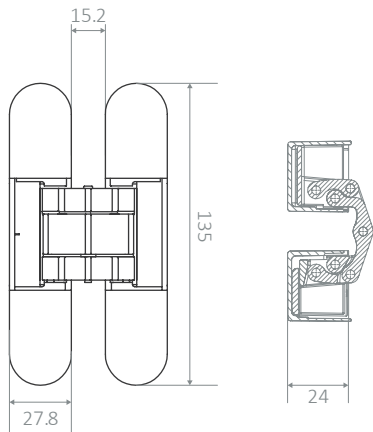


Material	Steel
Height	41.5mm
Width	180mm
Depth	62.5mm
Hold Open Arm	250mm
Arm adjustable	230-340mm
Power size	4
Max door width	1050mm
Max door weight	85kg
Finish	Silver

HINGES:

3D 60 CONCEALED HINGES

APECS 3D 60 ADJUSTABLE CONCEALED HINGES ARE AN IDEAL TOP QUALITY SOLUTION FOR TIMBER DOORS



APECS 3D 60 concealed hinges can be mounted on doors unobtrusively. 3D 60 incorporates security in their design as there are no external components visible or vulnerable to attack. A pair of these concealed hinges is ideal for flush faced or wooden doors up to 60kg in commercial and residential buildings. Concealed hinges are fully 3D adjustable and come with smooth removable covers.

- Comes as a set of two
- 3D adjustable
- Removable covers
- Maximum door load 60kg & 80kg
- In-house tested to EN 1935 requirements

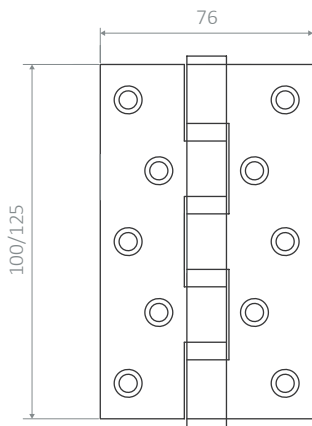


Material	Zinc Alloy
Height	135mm
Depth	24mm
3D adjustment vertical	2.5mm
3D adjustment horisontal	2mm
3D adjustment depth	1mm
Opening angle	180°
Cutting diameter	28mm
Cutting length	135mm / 92mm
Cutting depth	8mm / 25mm
Max door weight <i>(for a pair)</i>	60kg
Min door thickness	38mm
Max door width	1000mm
Finish	Matt Chrome

HINGES:

INOX HINGES

APECS INOX HINGES ARE IDEAL FOR STANDARD INTERNAL TIMBER DOORS IN RESIDENTIAL AND COMMERCIAL USES



APECS INOX hinges are ideal for light duty interior doors in residential and commercial buildings. The high level of production gives these hinges a superior finish. Four ball bearings provide smooth and quiet operation while maintaining efficiency and durability.

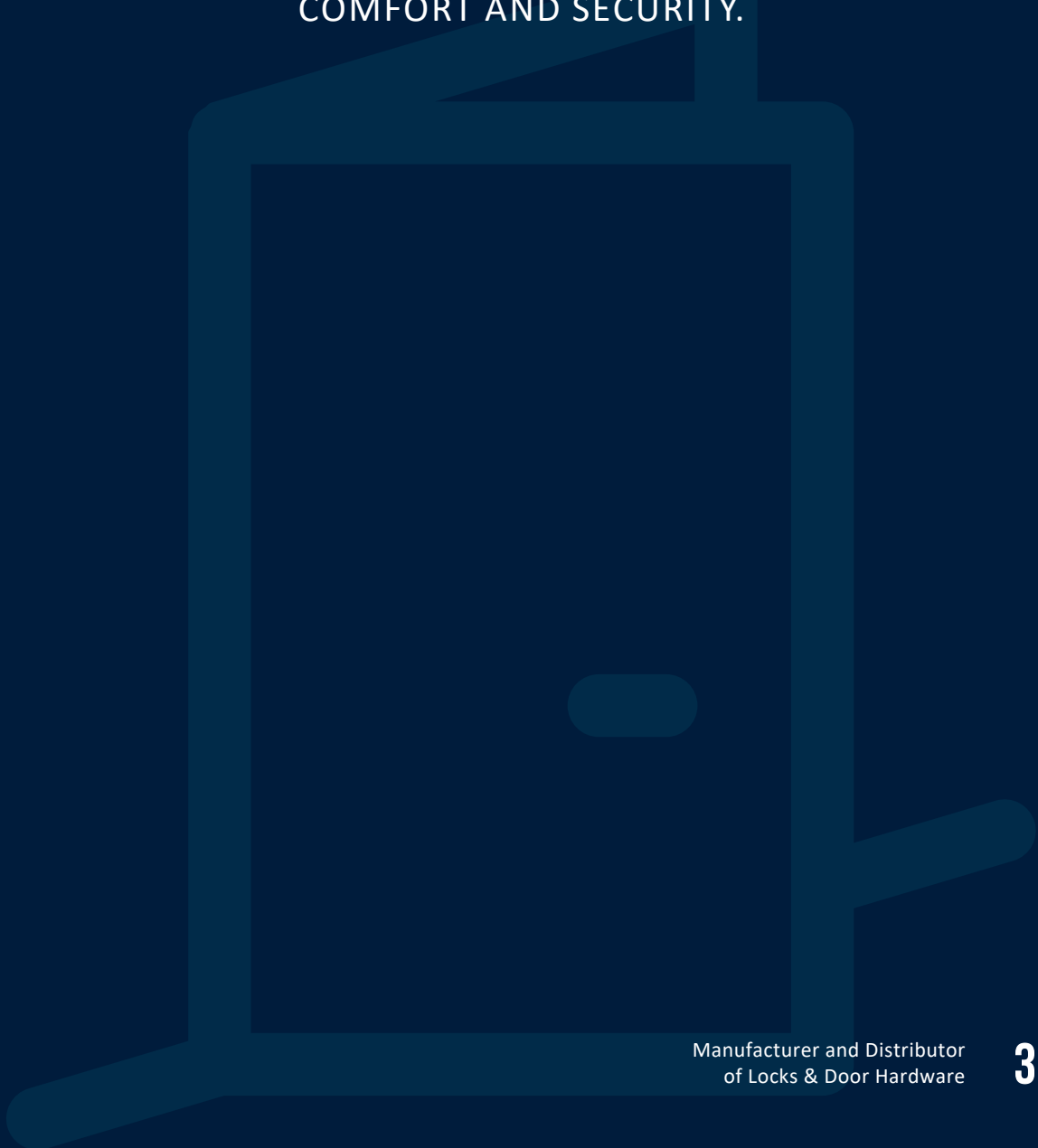
- Come as a set of two
- Four ball race bearings provide smooth and quiet operation
- Stainless Steel suitable for wet environment
- Universal fit
- Straightforward installation
- Max load 40kg & 50kg

Material	Stainless Steel
Thickness	3mm
Tube diameter	12mm
Ball race bearings	4
Height	100mm 125mm
Width	75mm
Max door width	1000mm
Max door weight <i>(for a pair)</i>	40kg 50kg
Finish	Satin



DOOR FURNITURE & ACCESSORIES

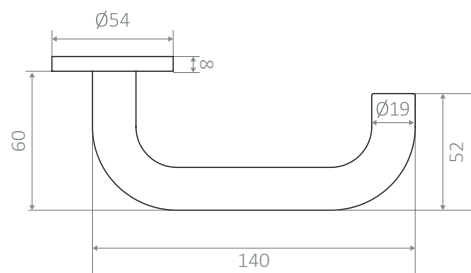
OUR EXTENSIVE RANGE OF DOOR FURNITURE, ACCESSORIES AND RELATED PRODUCTS TO MAXIMISE COMFORT AND SECURITY.



HANDLES:

DH 03 INOX HANDLES

APECS DH 03 IS A SIMPLE AND ELEGANT SOLUTION
IN HIGH FOOTFALL AREAS



APECS DH 03 handles are ideal for commercial and contemporary residential properties as they provide the quality and durability to operate within these environments. Their ergonomic design fits any widely-used door styles.

Material	Grade 304 Stainless Steel
Rose diameter	54mm
Handle length	140mm
Handle diameter	19mm
Spindle length	110mm
Finish	Satin

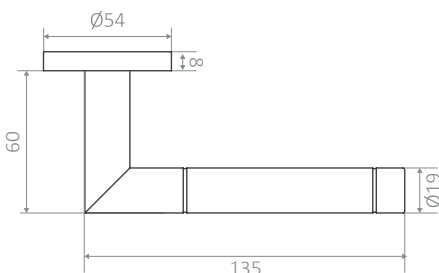
- 304 Stainless Steel for high corrosion resistance
- Both options of bolt through and screw fixings included
- Concealed-fix press-on rose
- 110mm spindle included
- Sold in pairs
- Matching accessories available



HANDLES:

DH 14 INOX HANDLES

APECS DH 14 STAINLESS STEEL EXCLUSIVE DESIGN HANDLES ARE SUITABLE
FOR INTERNAL AND EXTERNAL DOORS IN HIGH FOOTFALL AREAS



APECS DH 14 handles are engineered to offer a stunning style and choice with proven quality and reliability. Their sleek design fits widely-used residential and commercial doors and their superior material ensures durability against wear and tear.

Material	Grade 304 Stainless Steel
Rose diameter	54mm
Handle length	135mm
Handle diameter	19mm
Spindle length	110mm
Finish	Satin

- 304 Stainless Steel for high corrosion resistance
- Both options of bolt through and screw fixings included
- Concealed-fix press-on rose
- 110mm spindle included
- Sold in pairs
- Matching accessories available



ESCUTCHEON:

INOX ESCUTCHEON

APECS EURO PROFILE STAINLESS STEEL KEYHOLE ESCUTCHEONS ARE GREAT FOR ADDING A FINISHING TOUCH TO ANY DOOR



APECS Stainless Steel euro profile concealed fix round rose escutcheon is made of grade 304 stainless steel and is suitable for low temperatures and highly humid environments. It is a great match for APECS Stainless Steel Handles to complete the look in commercial and residential doors.

Material	Grade 304 Stainless Steel
Rose diameter	54mm
Rose thickness	9mm
Finish	Satin

- 304 Stainless Steel for high corrosion resistance
- Both options of bolt through and screw fixings included
- Concealed fix round rose



TURN & RELEASE:

INOX TURN & RELEASE

APECS TURN & RELEASE IS A SIMPLE AND ELEGANT SOLUTION FOR BATHROOM DOORS PROVIDING INDICATION TO THE EXTERIOR SIDE OF THE DOOR



APECS turn & release lock offers a smart and effective solution for commercial and residential doors. Its simple but sophisticated design and 304 grade stainless steel provide style and durability. Coin release locking mechanism for emergency access and a coloured segment to signal if engaged or vacant. This set is a great match for APECS Stainless Steel Handles.

Material	Grade 304 Stainless Steel
Rose diameter	54mm
Rose thickness	9mm
Spindle length	65mm
Finish	Satin

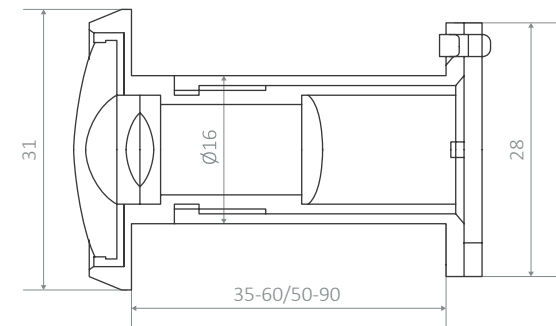
- 304 Stainless Steel for high corrosion resistance
- Both options of bolt through and screw fixings included
- Concealed fix round rose
- Ergonomic thumbturn



DOOR VIEWER:

DV 06 DOOR VIEWER

APECS DV 06 DOOR VIEWERS PROVIDE 180° ANGLE OF VISION AND ARE SUITABLE FOR EXTERNAL TIMBER DOORS



APECS door viewers are an ideal choice for customers seeking additional security with high quality. Wide 180° view angle gives customers additional control to help keep uncalled-for visitors away.

- Made of zamac for corrosion resistance
- 180° angle of vision
- Extends to suit doors 35-90mm deep
- Privacy curtain

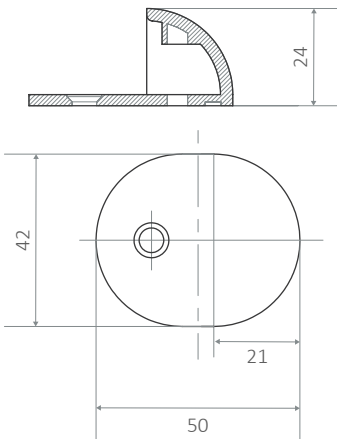
Material	Zamac
Tube diameter	16mm
Sizes	35-60mm, 50-90mm
Min door thickness	35mm, 50mm
Max door thickness	60mm, 90mm
Finish	Gold / Chrome



DOOR STOP:

DS 02 DOOR STOP

APECS DS 02 DOOR STOPS REDUCE NOISE AND PREVENT DAMAGE



APECS door stops have a sleek design and are most suitable for floor mounting. When excess force is applied and the door strikes, the additional rubber padding reduces noise and prevents damage to the door — a common occurrence in busy environments. Made of zamac for corrosion resistance.

- Made of zamac for corrosion resistance
- Noise reduction
- Damage prevention
- Straightforward installation

Material	Zamac
Length	50mm
Width	42mm
Height	24mm
Mounting	Floor
Finish	Matt Gold/Satin Nickel





WE VALUE OUR PARTNERS AND CLIENTS

FROM THE MOMENT AN ORDER COMES THROUGH TO THE DAY OUR PRODUCTS ARE INSTALLED, EACH AND EVERY CUSTOMER, NO MATTER THE SIZE OF THE ORDER, RECEIVES OUR BEST CARE.

CAN WE HELP YOU ANY FURTHER?

Did you find all the information you were looking for in this catalogue? If not and you have any questions or queries, please feel free to contact us. We will be happy to help by providing any additional information or support whenever you need it. We will always welcome your feedback and ideas which can benefit you.

APECS has an extensive range of products which covers over 4000 items worldwide. So, if you didn't find what you were looking for in this catalogue, please let us know and we will do our best to source the item for you.



NOTES:

NOTES:

NOTES:

APECS[®]

APECS CONSULT LTD

302-303 Harbour Yard, Chelsea Harbour,
London, SW10 0XD

Tel: +44 (0) 207 349 9888

WhatsApp: +44 (0) 792 883 2801

Web: www.apecs.co.uk