



APECS[®]

Product Catalogue
2021-2022



Our promise is to make people feel and be safe

"APECS began its proud history in 1992 and, in a quarter of a century, it has steadily grown to secure a leading position in the global marketplace, by designing and manufacturing a large range of high-quality hardware for the lock and architectural ironmongery industries. Our own laboratories equipped with state-of-the-art technologies ensure that APECS products are manufactured in compliance with the highest standards. Our professional relationship with testing organisations allows us to produce door hardware that stands out and ensures high-quality products our customers have confidence in.

APECS has a committed and caring team with a wealth of experience. We're serious about delivering great products and excellent customer service to our partners and customers."



A stylized, handwritten signature in white ink, appearing to read 'Nik Goncharov'.

Nik Goncharov
Managing Director APECS UK

CONTENTS



ABOUT APECS	04—05
CUSTOMER SUPPORT	06
HOW TO ORDER	06
APECS LOCATIONS	07
KEYS	08
APECS KEY SECURE	09
APECS SYMBOLS	10
CYLINDERS	11—19
LOCKS	19—22
PADLOCKS & BICYCLE LOCKS	23—27
DOOR CLOSERS & HINGES	29—32
DOOR FURNITURE & ACCESSORIES	33—39

ABOUT APECS

APECS COMES FROM THE LATIN WORD "APEX", WHICH MEANS "SUMMIT, PEAK, TOP".

APECS was established in 1991 in Moscow and over the past 28 years, it has steadily grown to secure a leading position in the global marketplace, by designing and manufacturing a large range of high-quality hardware for the lock and architectural hardware industries.

Our own laboratories equipped with state-of-the-art technologies ensure that APECS products are manufactured in compliance with the highest standards of Europe, China and the United States. Our professional relationship with testing organisations in Russia and the UK, allows us to produce door hardware that stands out and builds confidence in our customers.

APECS appreciates the pressures of the modern market and with offices in London, Moscow, St. Petersburg, Kharkiv, Ljubljana, Beijing and Shanghai. We are able to efficiently fulfil our customers needs. In spite of our global outreach, we remain an independent, family-owned company and we value a close working relationship across the two continents in which we operate.

Using our advanced manufacturing techniques and a strong network connection to industry specialists, we are able to supply a range of products to our customers in a timely and cost-effective manner.

HISTORY

1991

APECS launches in Russia



1999

APECS introduces training schemes for staff to comply with western trading practice



2000

First Beijing office opens



1993

Production of APECS-branded hardware begins



1995

Manufacturing expands to China



2004

APECS launches factory operations in Shanghai





OUR VISION

We strive to make people feel safe and protected. We utilise our expertise, innovations and global partnerships to manufacture solutions that guarantee protection and security for people worldwide.



OUR MISSION

We invest our experience to consistently provide our customers with superior quality hardware products that satisfy their needs and exceed expectations. We work to create solutions that are timely and affordable to all.



OUR VALUES

Our purpose is to guarantee security and we are devoted to performance and customer satisfaction. We strive to be trusted, respected and valued by our partners and customers.

Guarantee security. We know our customers want to feel and be safe. We aim to provide excellence, value and innovative products to ensure safety throughout.

Work as a team. We work as a tight-knit team. We are purpose-driven, diverse and share a passion for creating and achieving mutual goals.

Think long term. We know we succeed only when our customers and partners succeed. We do business in an open, direct and sustainable way.

2006 >

APECS develops new test centres in Shanghai for stringent in-house testing

2009

APECS ventures into retail with stores like Leroy Merlin, B&Q and OBI

2017 >

APECS celebrates its 25th anniversary

2019

APECS enters the door fabricator market with the launch of AI Secure

∨

2005 ^

New warehouse and HQ construction begins in Moscow

2011 >

APECS opens its London office to meet UK market demand

2013 ^

UK and European range of hardware and accessories launched

2020

Opened new warehouse, workshop and office facility in the Midlands

CUSTOMER SUPPORT



WE AIM TO BE THE BEST CHOICE FOR OUR CUSTOMERS AND THE MOST RELIABLE PARTNER FOR OUR ASSOCIATES



WEB. Visit apecs.co.uk for information on our products and services we offer.



CUSTOMER SERVICE. Should you have any questions, we're happy to help from 8am to 6pm, Monday to Friday. Please call our London office +44(0)2073499888 or send a message via WhatsApp +44(0)7928832801.



NEWSLETTER. Our email newsletter contains the latest news, insights and events. Visit apecs.co.uk to stay ahead.



MARKETING SUPPORT. Our dedicated team of specialists will assist you with any enquiry. Contact us via mail on marketing@apecs.co.uk.



SOCIAL MEDIA. We are on Facebook, Twitter, Instagram and LinkedIn. If you would like to collaborate with us on social media, please get in touch by mail on social@apecs.co.uk.

HOW TO ORDER



ONLINE

1. Register on apecs.co.uk/ register for trade account
2. Our admin team will be in touch within 24 hours
3. View products and technical information
4. Place order online and view your order history

PHONE

1. Contact us on +44(0)2073499888 and register over the phone for trade account
2. Place an order over the phone

OFFICE

1. Come to our Office:
Unit 4, Navigation Point,
Golds Hill Way,
Tipton, DY4 0PY
2. Register in-house for trade account
3. Place an order

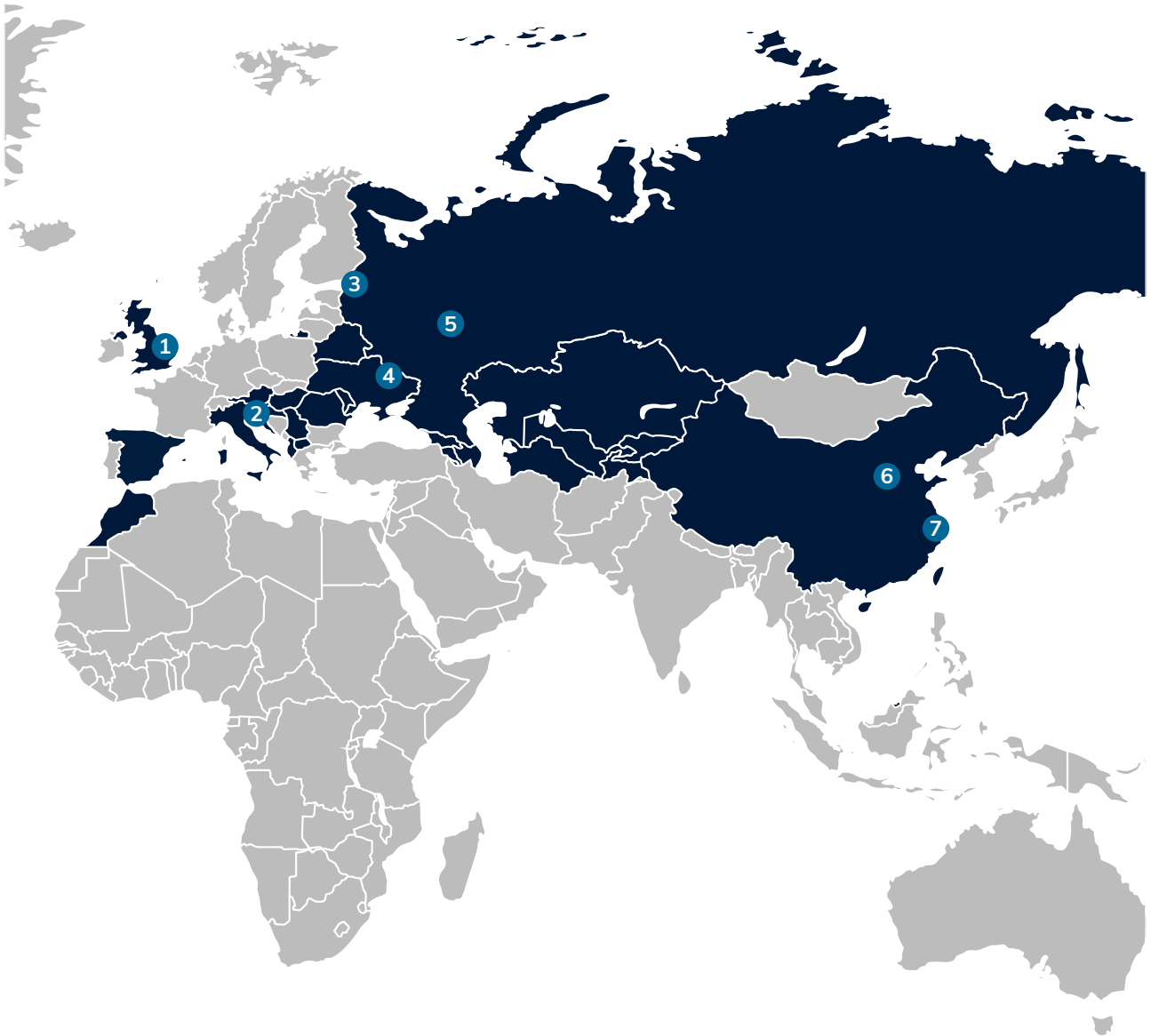
NEXT-DAY DELIVERY. Order before 1pm to receive your order next day (UK Mainland)*.

FREE DELIVERY. To qualify for a free delivery, order net total must be £100 excluding VAT.

* Orders made before 1pm are dispatched and delivered the next working day (Monday – Friday) excluding bank holidays and weekends, subject to stock availability.

*Delivery times are not guaranteed. Specific delivery details will be confirmed at the time of order. UK Mainland referred to as England, Wales and Scotland excluding Dumfries & Galloway, Tayside, Border Counties, Grampian and Highlands.

APECS LOCATIONS

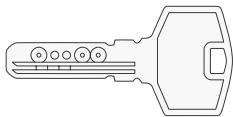


APECS OFFICES:

1. Tipton 2. Ljubljana 3. St. Petersburg 4. Kharkiv 5. Moscow 6. Beijing 7. Shanghai

APECS PRESENCE:

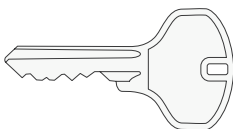
Albania, Armenia, Austria, Azerbaijan, Belarus, China, Croatia, Georgia, Hungary, Italy, Kazakhstan, Kosovo, Kyrgyzstan, Macedonia, Moldova, Morocco, Poland, Romania, Russia, Serbia, Slovenia, Spain, Tajikistan, Turkmenistan, Ukraine, United Kingdom, Uzbekistan



Dimple Key

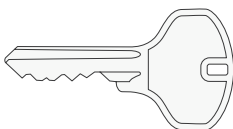
There are two types of dimple keys used with APECS products. One of our Dimple Keys is provided with a plastic key head and this is used for our AP cylinders. A Dimple Key without the plastic key head is used for the N6 cylinder and can also be provided with the BP cylinder as a higher security alternative to the Standard Key.

Both AP and BP dimple keys can be protected by the APECS Key Secure system which ensures that new copies of the key can only be made when a security code is provided by the customer. The APECS Dimple Keys can also only be copied by certified APECS Prime Centres, making them an extremely high security key choice.



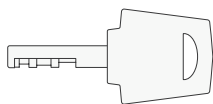
BP-V Key

The BP cylinder can also be provided with our BP-V key, which is a vertical standard key. This key allows for greater key cutting opportunities for locksmiths. Please note that BP cylinders provided with the BP-V key are not included in APECS Key Secure.



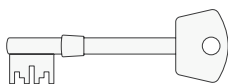
Standard Key

The APECS Standard Key is used with BP, XS, BC and RC Cylinders. The APECS Standard Key can be cut by any locksmith and provides a moderate level of security without key protection.



Disc Tumbler Key

The APECS Disc Tumbler Key is used with our Mastiff Padlock as well as the BL12 and BL16 bicycle locks. These locks provide a high level of security as well as an excellent option for extreme weather conditions.



Mortice Key

The APECS Mortice Key is used with our BS certified LX5 lock. Genuine mortice key blanks for the LX5 are available to purchase through APECS.

APECS KEY SECURE



SECURITY IS AT THE FOREFRONT OF EVERYONE'S MINDS AND WE ALL WANT OUR HOMES TO BE AS SECURE AS POSSIBLE. WE HAVE BEEN WORKING ON WAYS TO MAKE OUR PRODUCTS EVEN MORE SECURE AND SO WE ARE DELIGHTED TO ANNOUNCE THE INTRODUCTION OF OUR APECS KEY SECURE SYSTEM.

This new system ensures that the lock is always protected to the highest level. With APECS Key Secure, the customer can protect their keys with a unique security code which means that copies of the keys can only be made when the security code is provided.

It's extremely simple for customers to sign up to APECS Key Secure and they can do it at the same time as registering their Product Warranty or AI Secure Guarantee.

After the customer has registered, when they contact a locksmith or APECS to get new keys, they will have to provide their security code. This security code will then be checked against our central database and only then will new keys be able to be produced.

Each time a security code is entered, whether it is entered correctly or incorrectly, both the customer and APECS will be notified, meaning that you are always aware of key cutting attempts.

1

Register For Apecs Key Secure



2

Go To A Locksmith



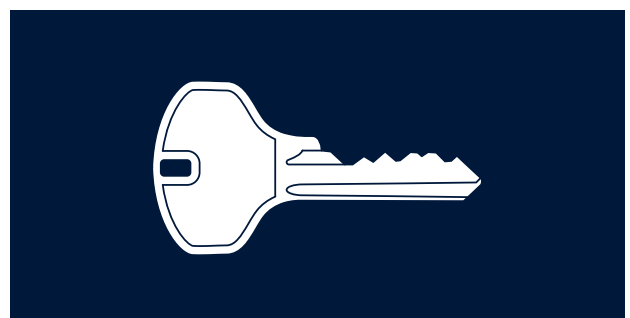
3

Give Them Your Lock Number & Security Code



4

Get Keys Cut









APECS SYMBOLS



 ANTI-PICK	Elements designed to protect from lock picking	 ANTI-BUMP	Elements designed to protect against bumping	 ANTI-DRILL	Elements protecting against drilling
 ANTI-SAW	Elements protecting from sawing	 PLUG EXTRACTION PROTECTION	Elements protecting from plug extraction	 ANTI-SNAP	Mechanism designed to protect from snapping
 SACRIFICIAL CUTS	Sacrificial Cuts	 MODULAR SYSTEM	Modular System	 L ↔ R	The product can be fitted on the right or on the left doors
 180°	Opening angle 180°	 E1-60	Fire resistant	 NSS 72	Declaration that the product meets the requirements of the Neutral Salt Spray (NSS) testing
 SILENT OPERATION	Features designed to deliver silent operation	 LOUD ALARM	The product has a loud alarm to enhance protection from burglary	 HRC >62	Declaration that the product meets the requirements of the Rockwell's material hardness testing
 500 00 CYCLES	Declaration that the product meets the requirements of durability testing	 -30° +60°	For use in -30 to +60 temperatures	 WEATHERPROOF	The product is weatherproof
 ART 123 4	Tested to ART quality label certification of bicycle locks (NL)	 30-90mm	Door width 30-90mm	 LAB TESTED	This product has passed testing in APECS laboratory
 3D	3D adjustable (horizontal, vertical, in-depth)	 180°	180° angle of vision	 PATENT PENDING	The patent certification is pending

CERTIFICATION SYMBOLS

 bsi.	Accredited by impartial British Standards Institute (BSI)	 SOLD SECURE	Accredited by Sold Secure (SS)	 DIAMOND GRADE	Passed the Sold Secure test to the highest standard, Diamond grade
 K1621947	Awarded the highest BSI Kitemark (three stars) and passed all criteria of the TS007 BSI Kitemark, inc. lock snapping tests	 K1621947	Awarded BSI Kitemark one star, and passed all criteria of the TS007	 K1687294	Awarded BSI Kitemark in respect of BS3621 thief Resistant Lock assembly, Key egress



CYLINDERS

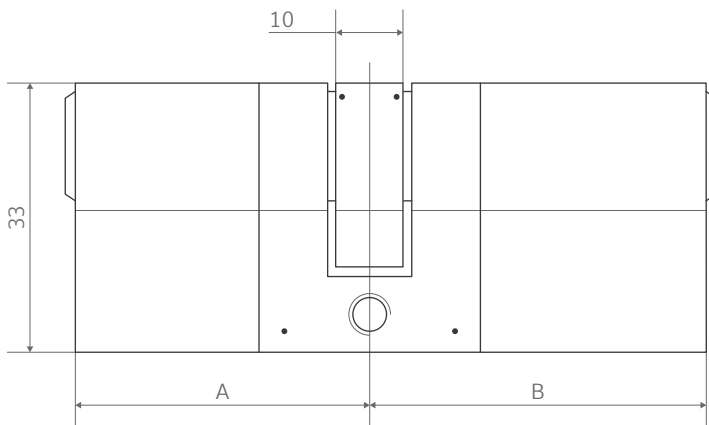


AP CYLINDER

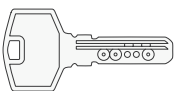
APECS AP IS DESIGNED TO PROTECT FROM ALL COMMON FORCED ENTRY METHODS OF ATTACK.



SCAN THE QR CODE TO WATCH PRODUCT VIDEO



Material	Brass/Hardened Carbon Steel
Mechanism type	Pin tumbler
Effective differs	In excess of 180,000
Number of pins	9
Sizes	70-110mm and offsets
Variations	Key-Key & Thumbturn
Key type	Restricted profile dimple key
Number of keys	3/5
Finish	Brushed Brass/Brushed Satin Nickel



DIMPLE KEY

CERTIFICATES

- BSI 3 Star Kitemark – KM621947
- Sold Secure Diamond Standard – CLME08161454
- Tested to TS007:2014 A1:2015
- Tested to EN1303:2015 — 16000C6D

SECURITY INFORMATION

- Anti-pick: 4 pins on each side
- Anti-bump: double locking mechanism with

- track rail pins in combination with a unique shallow chamber
- Anti-drill: 2 pins on each side of the cylinder shell + 5 on each side in the cylinder core
- 1 steel driver pin on each side
- Snap-secure sacrificial point
- Restricted key profile
- 10-year guarantee
- 5-year snap-secure guarantee



OFFERING THE MAXIMUM LEVEL OF SECURITY FOR ENTRANCE DOORS.

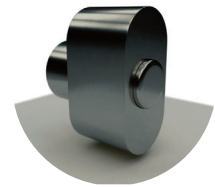
The APECS AP is our BSI 3 Star Kitemark, Sold Secure Diamond Standard Cylinder which offers maximum protection. It safeguards from all forced methods of attack ranging from snapping, drilling, plug-extraction, picking and bumping.

The APECS AP cylinder is specifically designed to protect from unauthorised access by burglars. The AP cylinder is engineered with a unique sacrificial point, which when tampered with externally sets an interlocking cam mechanism into action, preventing any further damage to the internal parts of the cylinder, whilst still keeping the lock operable from the inside.

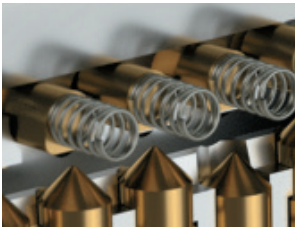
In the event of snapping, the home owner can still operate the door and exit the property due to the lock's unique mechanism which is engaged when the cylinders external section is snapped off. This mechanism slides the clutch into place, preventing further external damage and manipulation of the cam, whilst keeping the lock operable from the inside.

UNIQUE FEATURES

- Double locking mechanism with additional track rail pins
- Patent pending interlocking mechanism and hardened cam protection block prevents from snapping and plug extraction
- Patent pending ball-bearing connection ensures additional operation smoothness and strong fixing between the cylinder core and the cam
- Operable from inside when lock is tampered with externally



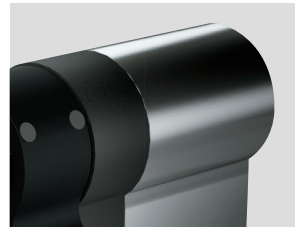
AVAILABLE AS A KEY-KEY OR KEY-THUMBTURN



Double locking mechanism with track pins offers maximum protection from bumping and picking



Snap secure sacrificial point



Operable from internal side when lock is tampered with externally



Anti-plug extraction



Drilling attack resistance: Hardened Steel pins in the cylinder core and body



Hardened Steel cam protection block prevents snapping and plug extraction



Interlocking mechanism engages when the external side is snapped



Anti-pick protection: special grooved pins



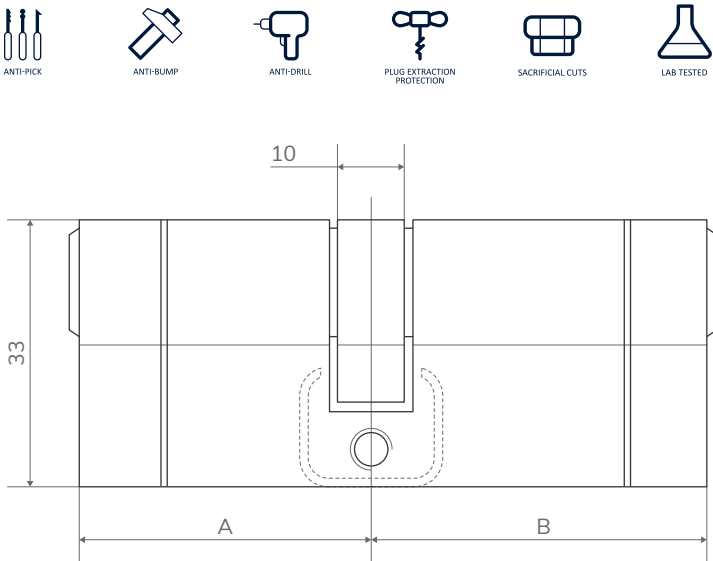
N6 CYLINDER

HIGH SECURITY LOCKING SOLUTION

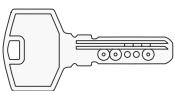
The APECS N6 open profile cylinder provides a very high security locking solution.

The cylinder offers protection from the main forced entry methods of attack; drilling, picking, bumping and plug extraction.

With sacrificial cuts on both sides of the cylinder and grub screws for easy repinning, this BSI 1 Star Kitemark cylinder is the perfect high security locking solution.



Material	Brass
Cylinder mechanism type	Pin tumbler
Effective differs	In excess of 117,000
Number of pins	5 or 6
Sizes	62-110mm & offsets
Variations	Key-Key & Thumbturn
Key type	Dimple key
Number of keys	3
Finish	Brass / Satin Nickel



UNIQUE FEATURES

- U-shaped Stainless Steel protection pin & sacrificial cut
- Grub screws for easy repinning

CERTIFICATES

- BSI 1 Star Kitemark – KM621947
- Tested to TS007:2014 A1:2015
- Tested to EN1303:2005 — 16000C62*

SECURITY INFORMATION

- Anti-pick: 4 anti-pick pins on each side
- Anti-bump: shallow chamber
- Anti-drill: 3 anti-drill pins on each side
- Anti-plug extraction
- Brass differ and driver pins
- Stainless Steel springs



XS CYLINDER

OFFERING RESISTANCE AGAINST THE MOST COMMON METHODS OF ATTACK

APECS XS open profile cylinder offers a high security locking solution at an affordable price.

The cylinder offers protection from the main forced entry methods of attack: drilling, picking, bumping and plug extraction.

This cylinder is a BSI 1 Star Kitemark cylinder which has 4 anti-pick pins and 3 anti-drill pins on each side as well as a shallow chamber and a u-shaped stainless steel protection pin that prevents plug extraction.



ANTI-PICK



ANTI-BUMP



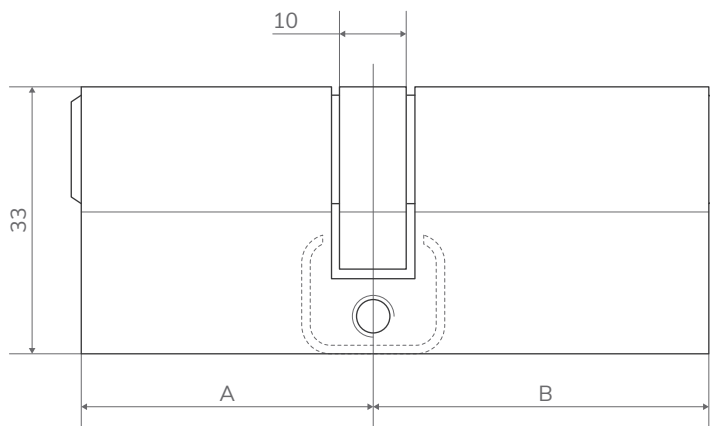
ANTI-DRILL



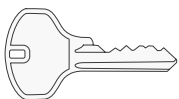
PLUG EXTRACTION PROTECTION



LAB TESTED



Material	Brass
Cylinder mechanism type	Pin tumbler
Effective differs	In excess of 117,000
Number of pins	6
Sizes	70-110mm & offsets
Variations	Key-Key & Thumbturn
Key type	Standard key
Number of keys	3
Finish	Brass / Satin Nickel



STANDARD
KEY

UNIQUE FEATURES

- U-shaped Stainless Steel protection pin that prevents from plug extraction

CERTIFICATES

- BSI 1 Star Kitemark – KM621947
- Tested to TS007:2014 A1:2015
- Tested to EN1303:2005 — 16000C62*

SECURITY INFORMATION

- Anti-pick: 4 anti-pick pins on each side
- Anti-bump: shallow chamber
- Anti-drill: 3 anti-drill pins on each side
- Anti-plug extraction
- Brass differ and driver pins
- Stainless Steel springs



BC CYLINDER

STANDARD CYLINDER WITH SACRIFICIAL CUTS OFFERING A GOOD LEVEL OF SECURITY AT AN AFFORDABLE PRICE

The APECS BC cylinder has been updated for 2020 with sacrificial cuts, anti pick and anti drill pins to add extra layers of security. With brass differ and driver pins aswell as a single row of 6 pins, the APECS BC open profile cylinder offers great value for money.

APECS BC open profile cylinder is suitable for any euro profile lock and will fit uPVC, timber and any other entrance doors when security is required with a moderate level of protection.



ANTI-PICK



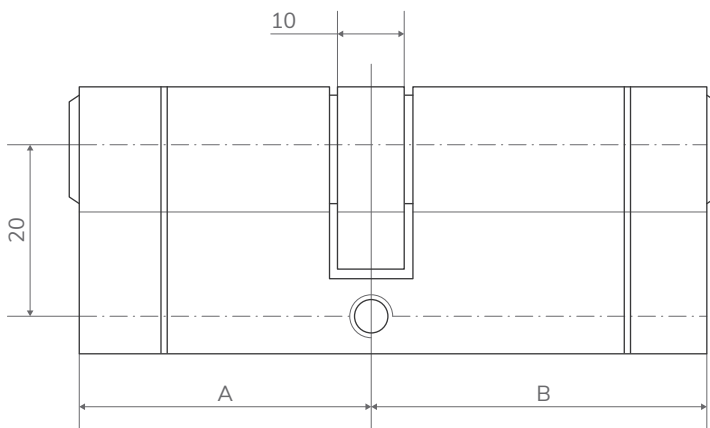
ANTI-DRILL



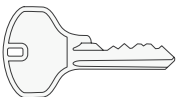
SACRIFICIAL CUTS



LAB TESTED



Material	Brass
Cylinder mechanism type	Pin tumbler
Effective differs	In excess of 15,000
Number of pins	6
Sizes	60-110mm & offsets
Variations	Key-Key & Thumbturn
Key type	Standard key
Number of keys	3
Finish	Brass/Nickel



STANDARD
KEY

CERTIFICATES

- Tested to EN1303:2015 — 16000C30

SECURITY INFORMATION

- Brass differ and driver pins
- Single row - 6 pins
- Sacrificial cuts
- Anti pick pins
- Anti drill pins



RC CYLINDER

AN INDUSTRY STANDARD-SIZED LOCK AND AN EASY RETROFIT REPLACEMENT TO SUIT ALL COMMON NIGHTLATCHES

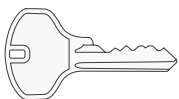
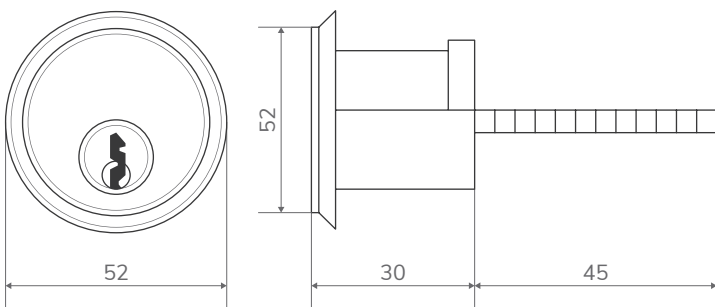
APECS RC rim cylinder is an industry standard-sized lock and an easy retrofit replacement to suit all common nightlatches.

It provides key access from the external side of the door. The cylinder offers a moderate level of security at a fair price.

Solid rose and a backplate are supplied to complete the set.



Material	Brass
Cylinder mechanism type	Pin tumbler
Number of pins	5
Tail	45mm
Key type	Standard key
Number of keys	3
Finish	Brass/Nickel



STANDARD
KEY

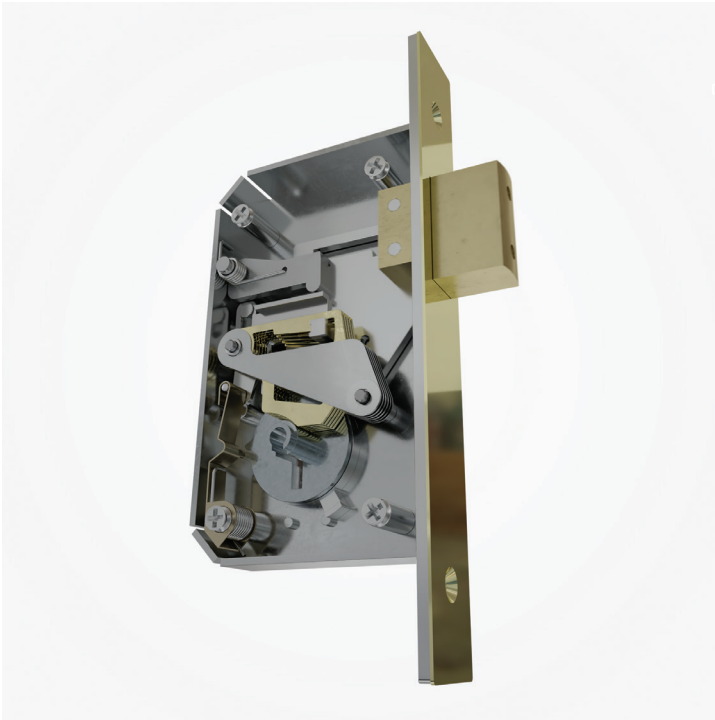
SECURITY INFORMATION

- Drill resistant cylinder housing
- Brass rim body and rose
- Brass cylinder core with brass differ and driver pins
- Stainless Steel springs



The image features two thick, dark blue diagonal lines. One line starts from the top right corner and extends towards the center. The other line starts from the bottom left corner and extends towards the center. They are positioned symmetrically around the central text.

LOCKS



LX5 DEADLOCK

APECS LX5 LEVER DEADLOCK IS AN IDEAL SOLUTION FOR MOST RESIDENTIAL AND COMMERCIAL TIMBER DOORS



SCAN THE QR CODE TO WATCH PRODUCT VIDEO



KH687294



ANTI-PICK



ANTI-DRILL



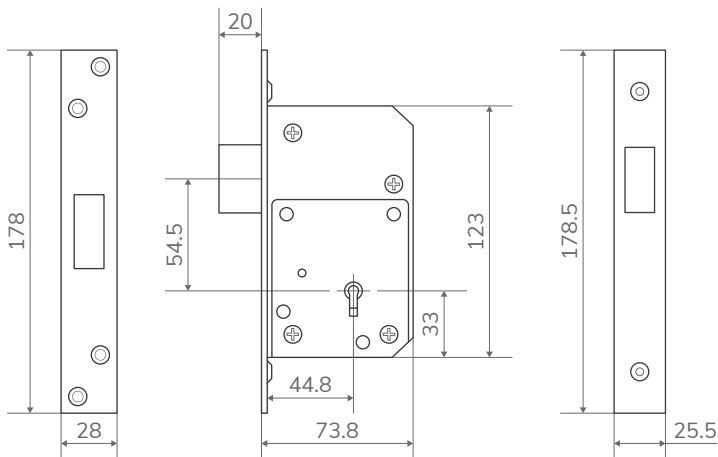
ANTI-SAW



L ↔ R



LAB TESTED



Material	Steel
Backset	44mm
Case width	28mm
Case depth	73.8mm
Case height	123mm
Faceplate width	25.5mm
Faceplate length	178.5mm
Packaging type	Cardboard

UNIQUE FEATURES

- Springless lever mechanism provides long-lasting durability and lost motion action
- Unique mechanism provides smooth key operation
- Anti-saw: 20mm deadbolt with hardened steel pins
- Anti-drill: hardened steel plates on both sides
- Anti-pick: unique springless lever mechanism
- Space to fit single or double pole micro switches
- Easy retrofit solution

CERTIFICATES

- Tested to BS3621:2007

MAXIMUM LEVEL OF SECURITY.

APECS LX5 is a lever deadlock that provides the maximum level of security. This lock is specifically engineered to offer a modern, enhanced alternative to other lever deadlocks on the market.

APECS has modified the traditional British 5-lever high-security deadlock, by developing its own unique springless mechanism. This mechanism delivers lost motion action and helps to secure the lock from picking, as well as provide long-lasting durability.

The lock features a solid brass 20mm deadbolt, reinforced with hardened steel pins, which guarantees the highest level of protection from drilling and sawing.

In addition, LX5 comes with hardened steel plates on each side to withstand severe drill attacks.

The lock can also be fitted with either a single or double pole micro switch, to have the door additionally secured with an alarm.

APECS LX5 is an ideal retrofit upgrade for 5-lever deadlocks on the market, as well as a great choice for new entrance doors.

THE LOCK COMES WITH 2 LEVER KEYS MADE OF BRASS, AND HAS A FAMILIAR BRITISH DESIGN



HARDENED STEEL PLATES

On each side to withstand severe drill attacks.



EXTRA SECURITY

Can be fitted with double pole micro switch to have the door additionally secured with an alarm.



UNIVERSAL APPLICATION

Can be fitted on left side or right hand side doors.



EXTRA STRONG 20MM DEADBOLT

Made of solid brass and has additional Hardened Steel pins, which guarantees the highest level of protection from drilling and sawing.



SPRINGLESS LEVER MECHANISM

Unique mechanism, developed by APECS, that delivers lost motion action, and maximizes the level of protection from picking.



SYNCHRONIZING CAM THROWER

Helps to deliver lost motion action and aids in delivering long-lasting durability.

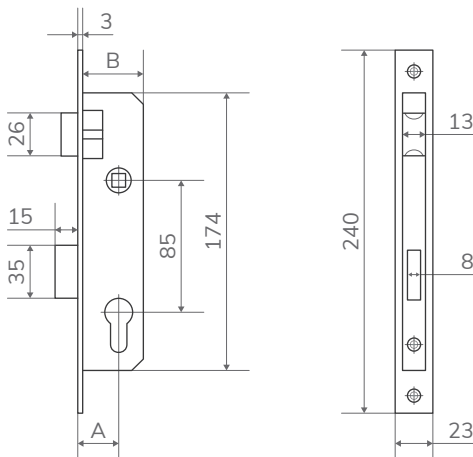


NP75 EURO SASHLOCK

NARROW PROFILE SASHLOCK FOR ALUMINIUM DOORS


APECS NP75 is ideal for slimline aluminium profiles and can also be used on uPVC and timber doors when 85 PZ centres are required, but where multi-point locking is not possible and/or not needed.

The advantage of locks in this series is their wide range of backsets (20mm-45mm), providing a solution for virtually any narrowstyle doors. The latch is reversible with a simple twist to quickly and easily change the handling of the lock.




Material	Steel
A — Backset (mm)	20/25/30/35/40/45
Centres	85mm
B — Case depth (mm)	37/42/47/52/63/68
Case width	13mm
Case height	174mm
Faceplate width	23mm
Faceplate length	240mm
Bolt throw	15mm
Spindle hole	8mm
Finish	Nickel

- Perfect for aluminium doors
- Accepts euro profile cylinder locks
- Reversible latch bolt
- Provides both latch and deadbolt locking
- Striking plate and screws are included
- Operation — 250,000 cycles
- Corrosion tested — 72 hours NSS



PADLOCKS &
BICYCLE LOCKS





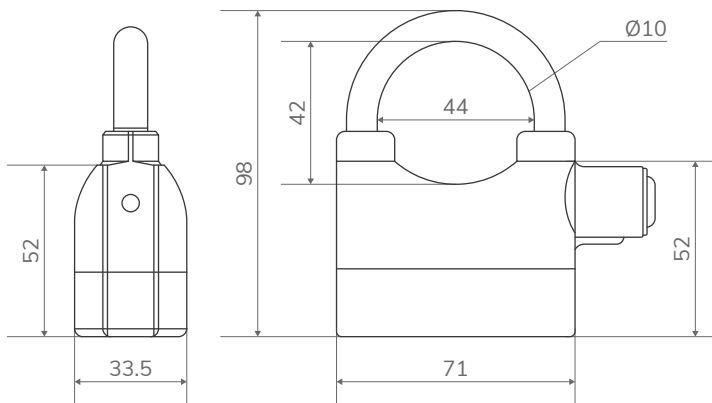
PDZ ALARM PADLOCK

BATTERY-POWERED PADLOCK

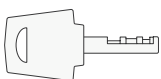
APECS PDZ is a battery-powered padlock with a built-in 110Db siren. It detects shock motion — if the body or shackle are attacked, the siren is activated until manipulations are stopped.

Its zinc alloy body and heat processed Hardened Steel shackle ensure it is resilient to cutting and is corrosion resistant.

The padlock is extensively used for vehicles, tool boxes, garden sheds, warehouses and many more applications. In addition, the alarm can be disabled when not required.



Material	Zamac / Steel
Locking Mechanism	Cylinder
Height	98mm
Width	71mm
Shackle	Hardened Steel
Shackle h-eight spacing	42mm
Shackle width spacing	44mm
Number of keys	3
Finish	Black



DISC TUMBLER KEY

- 110Db twin tone siren
- Attack and shock sensor
- Hardened Steel shackle - 10mm
- Waterproof
- Frost-resistant
- High-security locking mechanism
- Extra set of LR44 button cell batteries

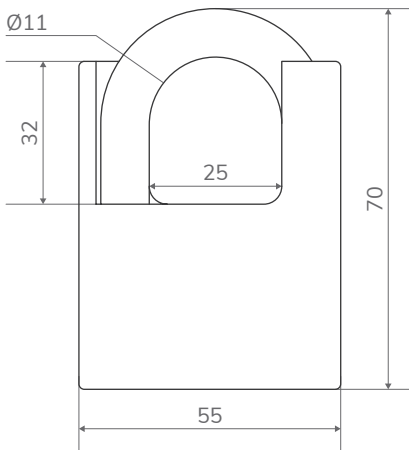


MASTIFF PADLOCK

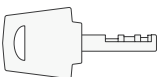
HIGH-SECURITY ALTERNATIVE

A high-security alternative to standard brass padlocks. Enlarged walls protect the lock from force and saw attacks.

Highly resilient to all types of weather conditions due to its solid brass body and Hardened Steel shackle.



Material	Brass / Steel
Locking Mechanism	Disc tumbler
Height	82mm
Width	55mm
Shackle	Hardened Steel
Shackle height spacing	32mm
Shackle width spacing	25mm
Number of keys	4
Finish	Chrome



DISC TUMBLER
KEY

- Closed shackle protection
- Hardened Steel shackle - 11mm
- Corrosion-resistant
- Frost-resistant
- High-security locking mechanism

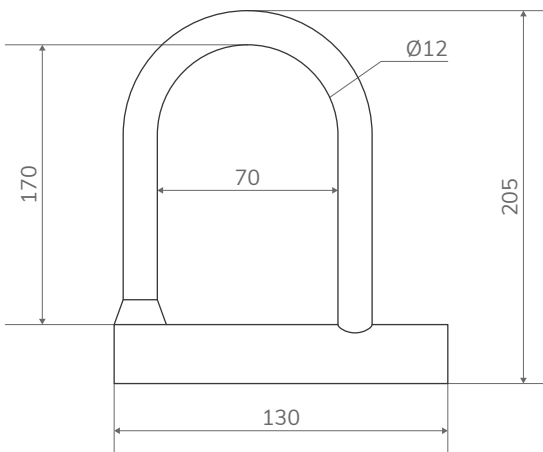


BL 12 BICYCLE LOCK

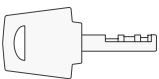
RUBBER PROTECTIVE COATING

APECS BL 12 offers a moderate level security, with a 12mm hardened steel shackle providing great cut resistance.

This bike lock is designed to have a simple and sleek look with a rubber protective coating meaning it keeps your frame's paintwork scratch-free.



Material	Brass / Steel
Locking Mechanism	Disc tumbler
Height	205mm
Width	130mm
Shackle	Hardened Steel
Shackle height spacing	170mm
Shackle width spacing	70mm
Number of keys	2
Finish	Chrome & Blue rubber



DISC TUMBLER
KEY

- Hardened Steel shackle — 12mm
- Weatherproof
- Frost-resistant
- High-security locking mechanism



BL 16 BICYCLE LOCK

A HIGH SECURITY OPTION FOR PROTECTING A BICYCLE

APECS BL 16 provides a high security option for protecting a bicycle, with a hardened steel 16mm shackle. The lock has been tested to Art 4051 4*.

A rubber protective coating keeps your frame paintwork scratch free. A double bolt locking mechanism gives the lock an extensive holding power and a high security disc style cylinder to withstand picking.



ANTI-PICK



ANTI-SAW



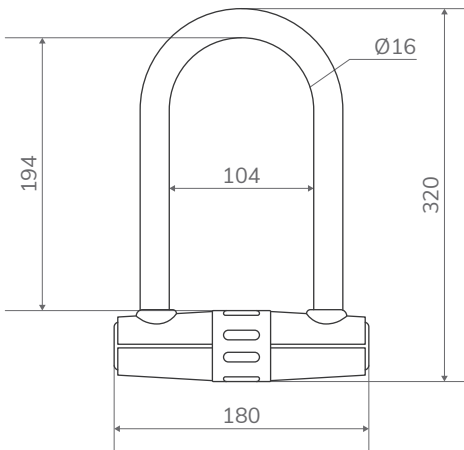
WEATHERPROOF



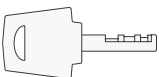
ART



LAB TESTED



Material	Steel
Locking Mechanism	Disc tumbler
Height	320mm
Width	180mm
Shackle	Hardened Steel
Shackle height spacing	194mm
Shackle width spacing	104mm
Number of keys	2
Finish	Black & Grey



DISC TUMBLER KEY

- ART 4051 certificate 4*
- Hardened Steel shackle — 16mm
- Weatherproof
- Frost-resistant
- High-security locking mechanism





DOOR CLOSERS &
HINGES





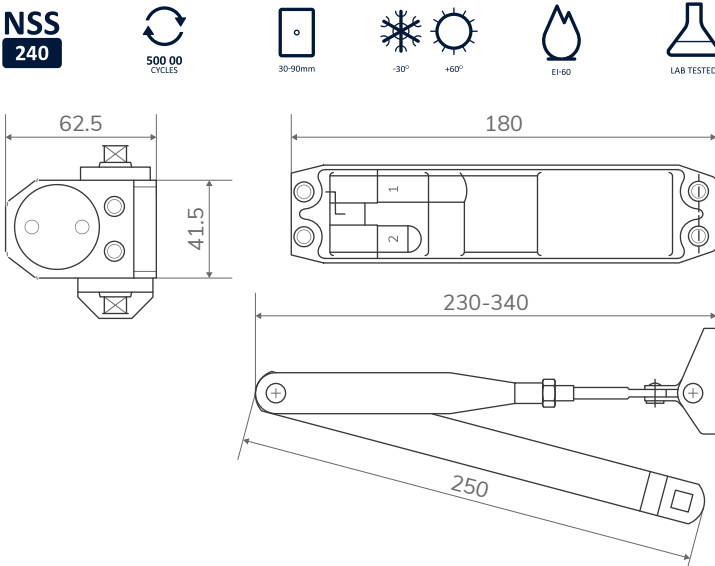
DC 204 DOOR CLOSER

THE COMPACT FIXED POWER FIRE RESISTANT OVERHEAD DOOR CLOSER

APECS DC 204 is a compact fixed power fire resistant overhead door closer, which is suited to most common aluminium, timber or hollow metal doors and frames.

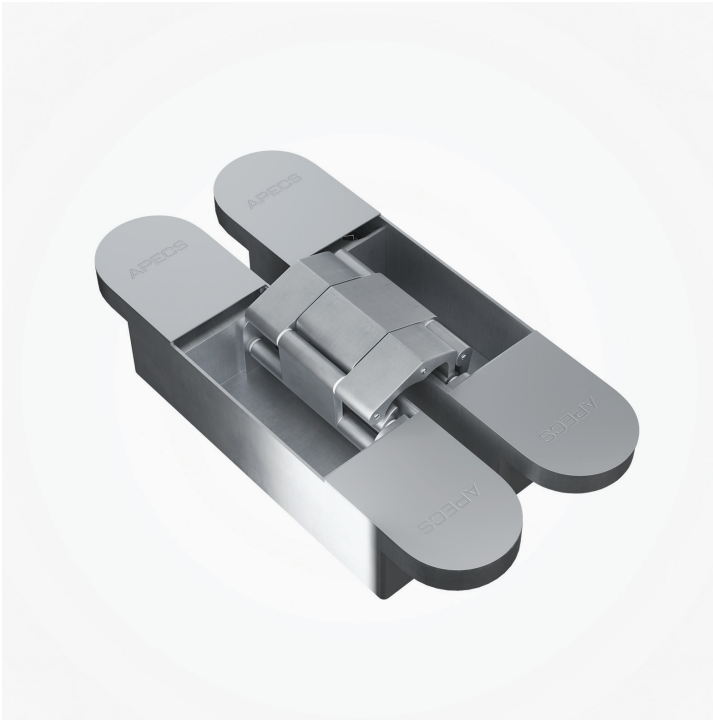
This door closer exhibits characteristics of performance, durability and quality that specifiers have come to expect from APECS.

As a standard, DC 204 comes with a screw thread armset with a straightforward installation.



Material	Steel
Height	41.5mm
Width	180mm
Depth	62.5mm
Hold Open Arm	250mm
Arm adjustable	230-340mm
Power size	4
Max door width	1050mm
Max door weight	85kg
Finish	Silver

- Operational temperature environment -30 to +60 °C
- Corrosion tested — 240 hours NSS
- In-house fire resistance tested for 60 minutes
- Hold Open Arm made of Hardened Steel
- Architrave bracket included
- Max opening — 180°
- Operation — 500,000 cycles



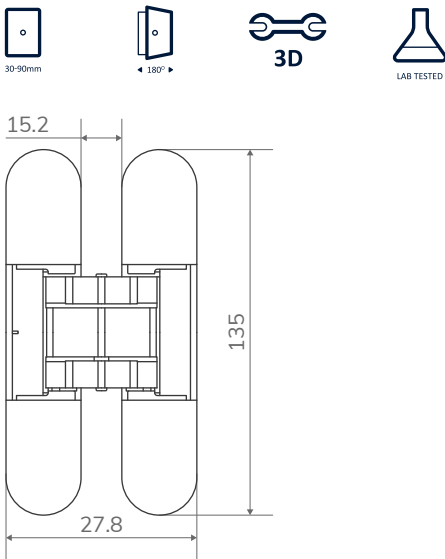
3D 60 HINGES

FULLY 3D ADJUSTABLE

APECS 3D 60 concealed hinges can be mounted on doors unobtrusively. 3D 60 incorporates security in their design as there are no external components visible or vulnerable to attack.

A pair of these concealed hinges is ideal for flush faced or wooden doors up to 60kg in commercial and residential buildings.

Concealed hinges are fully 3D adjustable and come with smooth removable covers.



Material	Zinc Alloy
Height	135mm
Depth	24mm
3D adjustment vertical	2.5mm
3D adjustment horizontal	2mm
3D adjustment depth	1mm
Opening angle	180°
Cutting diameter	28mm
Cutting length	135mm / 92mm
Cutting depth	8mm / 25mm
Max door weight (for a pair)	60kg
Min door thickness	38mm
Max door width	1000mm
Finish	Matt Chrome

- Comes as a set of two
- 3D adjustable
- Removable covers
- Maximum door load 60kg & 80kg
- In-house tested to EN 1935 requirements

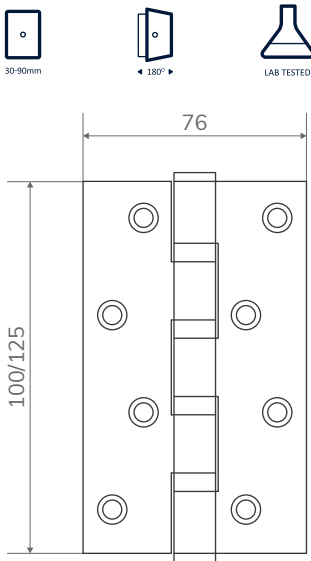


INOX HINGES

IDEAL FOR STANDARD INTERNAL TIMBER DOORS IN RESIDENTIAL AND COMMERCIAL BUILDINGS

APECS INOX hinges are ideal for light duty interior doors in residential and commercial buildings. The high level of production gives these hinges a superior finish.

Four ball bearings provide smooth and quiet operation while maintaining efficiency and durability.



Material	Stainless Steel
Thickness	3mm
Tube diameter	12mm
Ball race bearings	4
Height	100mm 125mm
Width	75mm
Max door width	1000mm
Max door weight (for a pair)	40kg / 50kg
Finish	Satin

- Come as a set of two
- Four ball race bearings provide smooth and quiet operation
- Stainless Steel suitable for wet environment
- Universal fit
- Straightforward installation
- Max load 40kg & 50kg



DOOR FURNITURE &
ACCESSORIES



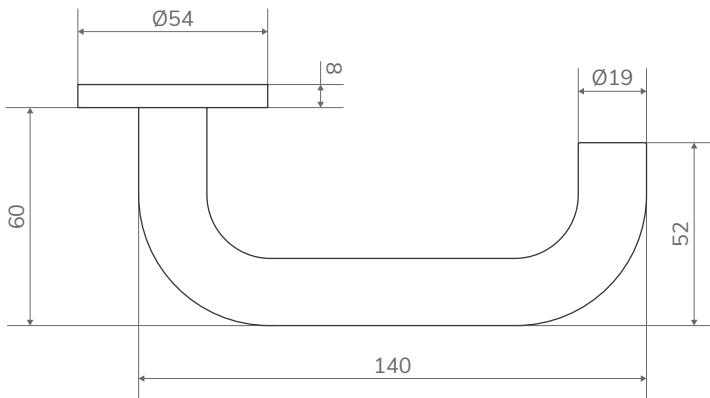


DH 03 INOX HANDLES

IDEAL FOR COMMERCIAL AND CONTEMPORARY RESIDENTIAL PROPERTIES

APECS DH 03 handles are ideal for commercial and contemporary residential properties as they provide the quality and durability to operate within these environments.

Their ergonomic design fits any widely-used door styles.



Material	Grade 304 Stainless Steel
Rose diameter	54mm
Handle length	140mm
Handle diameter	19mm
Spindle length	110mm
Finish	Satin

- 304 Stainless Steel for high corrosion resistance
- Both options of bolt through and screw fixings included
- Concealed-fix press-on rose
- 110mm spindle included
- Sold in pairs
- Matching accessories available

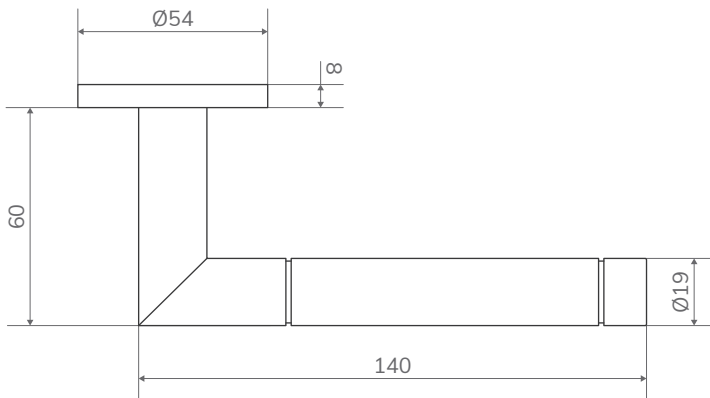


DH 14 INOX HANDLES

A STUNNING STYLE AND CHOICE WITH PROVEN QUALITY

APECS DH 14 handles are engineered to offer a stunning style and choice with proven quality and reliability.

Their sleek design fits widely-used residential and commercial doors and their superior material ensures durability against wear and tear.



Material	Grade 304 Stainless Steel
Rose diameter	54mm
Handle length	135mm
Handle diameter	19mm
Spindle length	110mm
Finish	Satin

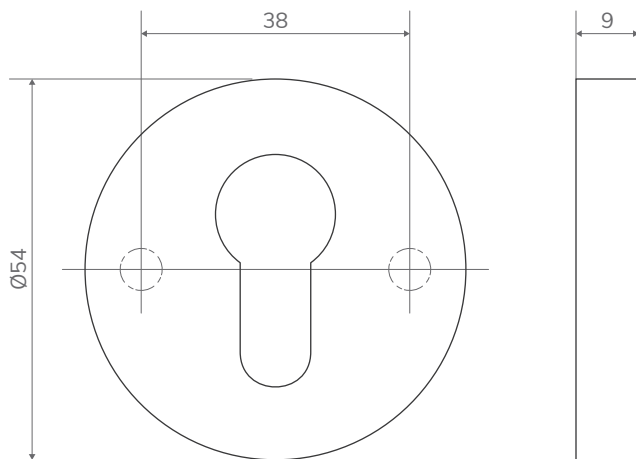
- 304 Stainless Steel for high corrosion resistance
- Both options of bolt through and screw fixings included
- Concealed-fix press-on rose
- 110mm spindle included
- Sold in pairs
- Matching accessories available



INOX ESCUTCHEON

STAINLESS STEEL EURO PROFILE

APECS Stainless Steel euro profile concealed fix round rose escutcheon is made of grade 304 stainless steel and is suitable for low temperatures and highly humid environments. It is a great match for APECS Stainless Steel Handles to complete the look in commercial and residential doors.



Material	Grade 304 Stainless Steel
Rose diameter	54mm
Rose thickness	9mm
Finish	Satin

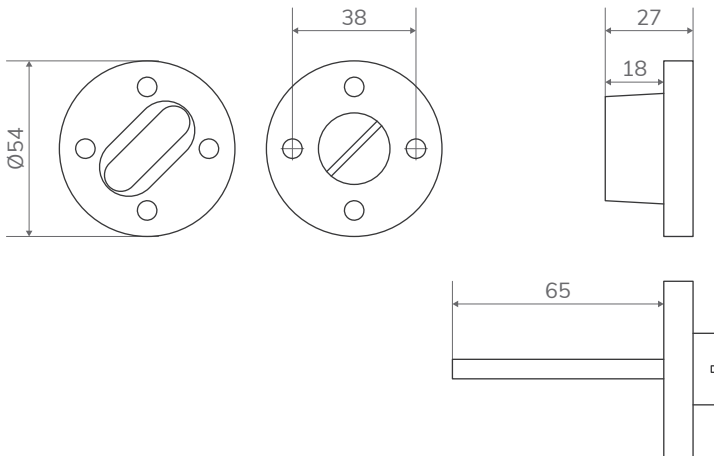
- 304 Stainless Steel for high corrosion resistance
- Both options of bolt through and screw fixings included
- Concealed fix round rose



INOX TURN & RELEASE

SMART AND EFFECTIVE SOLUTION

APECS turn & release lock offers a smart and effective solution for commercial and residential doors. Its simple but sophisticated design and 304 grade stainless steel provide style and durability. Coin release locking mechanism for emergency access and a coloured segment to signal if engaged or vacant. This set is a great match for APECS Stainless Steel Handles.



Material	Grade 304 Stainless Steel
Rose diameter	54mm
Rose thickness	9mm
Spindle length	65mm
Finish	Satin

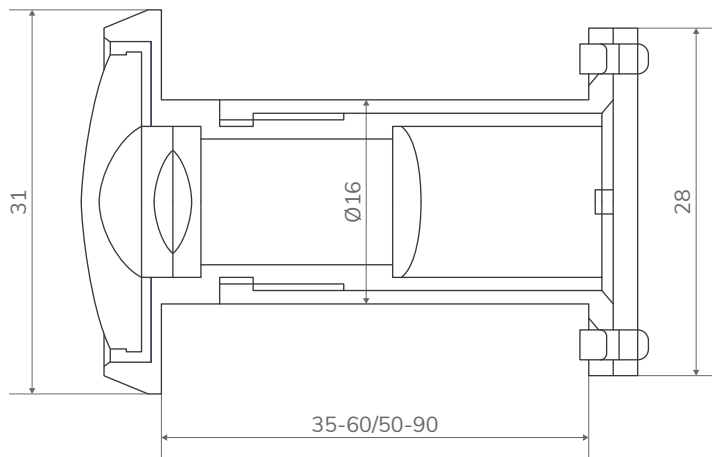
- 304 Stainless Steel for high corrosion resistance
- Both options of bolt through and screw fixings included
- Concealed fix round rose
- Ergonomic thumbturn



DV 06 DOOR VIEWER

PROVIDES 180° ANGLE OF VISION AND IS SUITABLE FOR EXTERNAL TIMBER DOORS

APECS door viewers are an ideal choice for customers seeking additional security with high quality. Wide 180° view angle gives customers additional control to help keep uncalled-for visitors away.



Material	Zamac
Tube diameter	16mm
Sizes	35-60mm, 50-90mm
Min door thickness	35mm, 50mm
Max door thickness	60mm, 90mm
Finish	Gold / Chrome

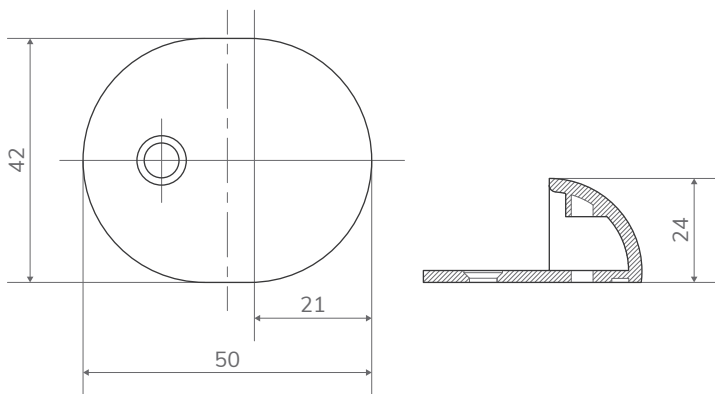
- Made of zamac for corrosion resistance
- 180° angle of vision
- Extends to suit doors 35-90mm deep
- Privacy curtain



DS 02 DOOR STOP

A SLEEK DESIGN MAKES THIS DOOR STOP PERFECT FOR BUSY ENVIRONMENTS

APECS door stops have a sleek design and are most suitable for floor mounting. When excess force is applied and the door strikes, the additional rubber padding reduces noise and prevents damage to the door — a common occurrence in busy environments. Made of zamac for corrosion resistance.



Material	Zamac
Length	50mm
Width	42mm
Height	24mm
Mounting	Floor
Finish	Matt Gold / Satin Nickel

- Made of zamac for corrosion resistance
- Noise reduction
- Damage prevention
- Straightforward installation

APECS CONSULT LTD

Unit 4, Navigation Point, Golds Hill Way,
Tipton, DY4 0PY

Tel: +44 (0) 207 349 9888

WhatsApp: +44 (0) 792 883 2801

Web: www.apecs.co.uk